



**HAL**  
open science

# Shiga Toxin-Producing *Escherichia coli* and Milk Fat Globules

Arthur Bagel, Delphine Sergentet

► **To cite this version:**

Arthur Bagel, Delphine Sergentet. Shiga Toxin-Producing *Escherichia coli* and Milk Fat Globules. *Microorganisms*, 2022, 10 (3), pp.496. 10.3390/microorganisms10030496 . hal-04552560

**HAL Id: hal-04552560**

**<https://vetagro-sup.hal.science/hal-04552560v1>**

Submitted on 22 Apr 2024

**HAL** is a multi-disciplinary open access archive for the deposit and dissemination of scientific research documents, whether they are published or not. The documents may come from teaching and research institutions in France or abroad, or from public or private research centers.

L'archive ouverte pluridisciplinaire **HAL**, est destinée au dépôt et à la diffusion de documents scientifiques de niveau recherche, publiés ou non, émanant des établissements d'enseignement et de recherche français ou étrangers, des laboratoires publics ou privés.



Distributed under a Creative Commons Attribution 4.0 International License



Review

# Shiga Toxin-Producing *Escherichia coli* and Milk Fat Globules

Arthur Bagel<sup>1</sup> and Delphine Sergentet<sup>1,2,\*</sup>

<sup>1</sup> ‘Bacterial Opportunistic Pathogens and Environment’ Research Team, Université de Lyon, UMR5557 Ecologie Microbienne Lyon, CNRS (National Center of Scientific Research), VetAgro Sup, Marcy-l’Etoile, 69280 Lyon, France; arthur.bagel@vetagro-sup.fr

<sup>2</sup> Laboratoire d’Etudes des Microorganismes Alimentaires Pathogènes-French National Reference Laboratory for *Escherichia coli* Including Shiga Toxin-Producing *E. coli* (NRL-STEC), VetAgro Sup—Campus Vétérinaire, Université de Lyon, Marcy-l’Etoile, 69280 Lyon, France

\* Correspondence: delphine.sergentet@vetagro-sup.fr

**Abstract:** Shiga toxin-producing *Escherichia coli* (STEC) are zoonotic Gram-negative bacteria. While raw milk cheese consumption is healthful, contamination with pathogens such as STEC can occur due to poor hygiene practices at the farm level. STEC infections cause mild to serious symptoms in humans. The raw milk cheese-making process concentrates certain milk macromolecules such as proteins and milk fat globules (MFGs), allowing the intrinsic beneficial and pathogenic microflora to continue to thrive. MFGs are surrounded by a biological membrane, the milk fat globule membrane (MFGM), which has a globally positive health effect, including inhibition of pathogen adhesion. In this review, we provide an update on the adhesion between STEC and raw MFGs and highlight the consequences of this interaction in terms of food safety, pathogen detection, and therapeutic development.

**Keywords:** STEC; MFGM; raw milk cheese; anti-adhesion strategy



**Citation:** Bagel, A.; Sergentet, D. Shiga Toxin-Producing *Escherichia coli* and Milk Fat Globules. *Microorganisms* **2022**, *10*, 496. <https://doi.org/10.3390/microorganisms10030496>

Academic Editor: Claudia Picozzi

Received: 14 January 2022

Accepted: 17 February 2022

Published: 23 February 2022

**Publisher’s Note:** MDPI stays neutral with regard to jurisdictional claims in published maps and institutional affiliations.



**Copyright:** © 2022 by the authors. Licensee MDPI, Basel, Switzerland. This article is an open access article distributed under the terms and conditions of the Creative Commons Attribution (CC BY) license (<https://creativecommons.org/licenses/by/4.0/>).

## 1. Introduction

In the Code of Hygienic Practice for Milk and Milk Products (Codex Alimentarius, 2004), raw milk is defined as milk that has not been heated beyond 40 °C or undergone any treatment that has an equivalent effect. Raw milk is an oil-in-water type emulsion and contains almost 900 g of water and 130 g of dry matter, in varying proportions [1]. Milk is a major source of calcium, and also an important supply of proteins, for those who consume it (newborn mammals and humans). Milk contains all essential amino acids, lipids, fatty acids, vitamins, and lactose [2]. One liter of whole milk contains approximately 38 g of fat, which is present mainly in the form of milk fat globules (MFGs) [3].

Raw milk cheeses are made from raw cow, sheep, or goat milk. Different cheese-making processes can be applied to create the end-products. The various combinations of ingredients (such as milk and cultures) and cheese-making processes result in a large diversity of cheeses. No less than 1200 different cheeses are made in France [4]. These include ripened or unripened soft, semi-hard, hard, or extra-hard products, which may be coated, uncooked, or cooked pressed cheeses (with short or long ripening), blue-type cheeses, lactic cheeses, and white mold cheeses.

Raw milk is unstable due to the presence of microflora and, therefore, is often treated to optimize its conservation and to prevent microbiological hazards. The microbiota of raw milk is complex and is derived from many sources, including direct contact with the animal (teats, hides, and feces), the surface of milking equipment (particularly if hygiene practices are poor), housing, bedding, feed, air, and water [5–7]. On the one hand, this dynamic bacterial community plays several beneficial roles in subsequent dairy products such as facilitating fermentation and promoting the health of consumers. On the other hand, microbiota can contain spoilage or pathogenic bacteria [5]. The milk microbiota is almost eliminated during heat treatment, such as ultra-high temperature (UHT) sterilization, and microfiltration, while in raw milk the microbiota is preserved. Different studies have shown

that the raw milk microbiota is useful to the human digestive system; therefore, it may be beneficial to preserve it [5,8]. In addition, the raw milk microbiota gives raw milk cheeses more varied and intense flavors than heat-treated milk cheeses. The raw milk microbiota can also influence the human intestinal microbiota, which contributes significantly to human health, for example, by modulating the immune system. The consumption of raw milk and raw milk cheeses can also reduce blood pressure in people with mild to moderate hypertension [9] and decrease allergies in infants [10,11]. However, the risk–benefit ratio of consuming raw milk products is difficult to estimate. Nevertheless, in France, it is strongly recommended to avoid giving raw milk products to children under 5 years old, pregnant women, and immunocompromised patients [12]. If poor hygiene procedures have been applied, particularly during milking, raw milk may be contaminated by pathogenic bacteria such as Shiga toxin-producing *Escherichia coli* (STEC).

STEC are foodborne zoonotic bacteria associated with large-scale epidemics that represent a major public health problem. Human STEC infection is most often linked to the ingestion of contaminated food and water, such as undercooked ground meat, raw milk cheeses, or raw vegetables. Raw milk and raw milk cheeses have been linked to foodborne infections associated with STEC in humans from different countries [13–20]. Ruminants are the primary reservoir of STEC. Milk is most often contaminated by feces (directly or indirectly) during the milking process. STEC are very frequently associated with severe forms of infection such as hemorrhagic colitis and, in very severe cases, systemic complications including hemolytic uremic syndrome (HUS). HUS is the leading cause of renal failure in children under 3 years of age. The estimated infectious dose is very low: between 5 and 50 viable cells [21,22].

The proportion of milk and dairy products involved in Rapid Alert System for Food and Feed (RASFF) notifications issued due to food contamination with STEC is very low compared to those involving meat products [23]. The RASFF is a European communication tool used when public health microbiological hazards are detected in the food chain and food products. In 2013, two RASFF notifications were related to STEC-contaminated dairy products versus 68 for meat products. In 2014, four RASFF notifications of dairy products contaminated with STEC were listed, compared with 53 for meat products. Likewise, there were 7 versus 16, 8 versus 26, and 4 versus 49 dairy-related and meat-related notifications, respectively, in 2015, 2016, and 2017 [23]. Furthermore, epidemiological studies have shown that this class of product is only a minor source of human enteric infection [24–26]. Interestingly, prevalence data on these enteropathogens in dairy matrices and ingestion-related outbreaks do not fit overall foodborne-related outbreak figures [26]. A study led by Douëllou et al. [27] showed that there were no differences in the key virulence properties of dairy STEC isolates compared with human isolates. The same authors hypothesized that this phenomenon might be related to an association between STEC and MFGs, thus inhibiting STEC adhesion to enterocytes.

Milk fat globules (MFGs) have a positive impact on the immune system, and their antimicrobial properties have been largely described [28–31]. The positive action of MFGs on human health seems to be carried out by the membrane (and membrane components) surrounding the globules. MFGs are small lipid droplets formed by a core of triacylglycerols (TAGs) and enveloped by a biological phospholipid triple membrane, the milk fat globule membrane (MFGM), which is derived from mammary epithelial cells [32]. The outer bilayer of the MFGM contains diverse (glyco)-proteins and (glyco)-lipids on its surface [33]. These glycoconjugates make up the glycocalyx and act as a source of specific bacterial and viral ligands [29,34].

The objective of this review is to provide an update on the interaction between STEC and raw MFGs and to highlight the implications of this interaction. First, we will review the impact of STEC in the raw milk sector. Then, we will review the mechanisms of association between STEC and fat globules. We will conclude with the beneficial and detrimental consequences of this association.

## 2. Raw Milk Sector and STEC

### 2.1. Importance of Raw Milk Cheeses

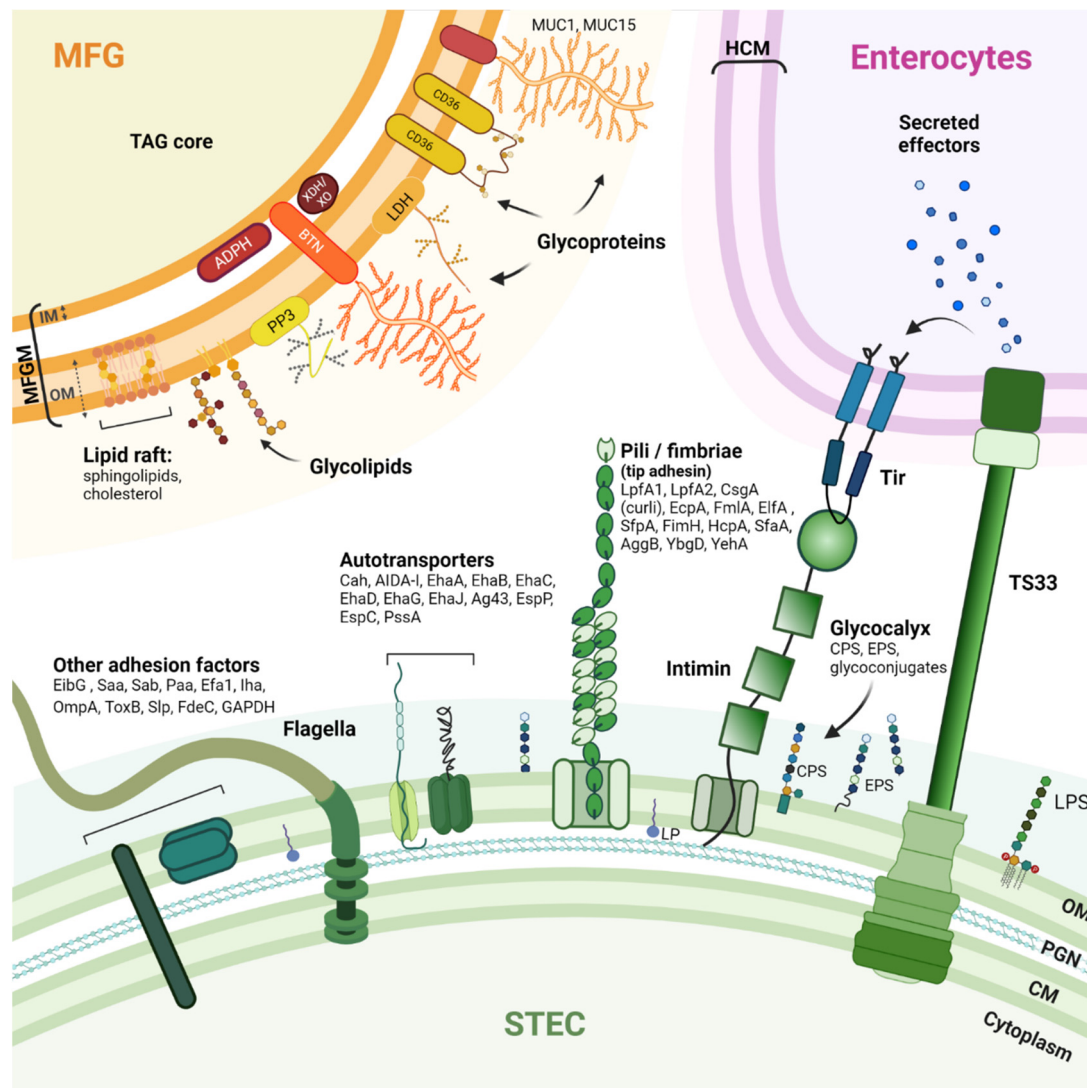
Cheeses are products with high added value and significant economic importance in France and Europe. In 2019, the annual cheese consumption per inhabitant was 26.8 kg in France and 19.1 kg in all of Europe [35]. In total, 10,630,000 t of cheese were produced in Europe in 2019 [35]. In France, cheeses represent one of the main food industries, worth approximately EUR 38.7 billion in 2017 [36]. In 2019, with all milk processing combined, French cheese production included 1,664,632 t of cow's milk cheese, 99,265 t of goat's milk cheese, and 59,638 t of sheep's milk cheese [35]. The production of raw milk cheese accounted for 172,128 t of the cow's milk cheese, 20,872 t of the sheep's milk cheese, and 9691 t of the goat's milk cheese produced in France in 2019 [35]. Raw milk cheeses represent the vast majority of farmhouse dairy products and approximately 75% of the volume of cheeses marketed under quality and origin identification signs (SIQO), including protected designations of origin (PDO) and protected geographical indications (PGI). Finally, a study has shown that 75% of French people consume raw milk cheeses at least once a month and that 33% of French people consume raw milk cheeses every week [37]. In contrast, no data on the worldwide consumption or production of raw milk cheeses are currently available.

Raw milk cheeses are part of French and European food heritage and are an essential tool to enhance product value and to create dynamism in our territories. They are part of a dynamic of rural development and land use planning; their production avoids the desertification of certain areas by providing a significant source of income for farmers. They are often produced under a PDO quality label. Raw milk cheeses encourage variety and diversification of production and contribute to the sustainability of rural economies. They protect traditional production areas, enhance the recognized know-how of operators, and facilitate, especially for small producers, the marketing of differentiated products with specific and clearly identifiable characteristics. In France, the competent authorities as well as scientists recognize the importance of raw milk cheese both in terms of gastronomic heritage and regional socio-economic development. At the same time, authorities and scientists seek to support the industry by improving scientific knowledge about STEC and developing methods for the control and surveillance of this bacteria from farm to fork.

### 2.2. STEC

STEC are foodborne zoonotic bacteria associated with large-scale epidemics that represent a major public health problem. Ruminants (cattle, buffalo, goats, and sheep) are the main reservoir of STEC [38,39]. Infected ruminants can be asymptomatic, harboring the bacteria in their gastrointestinal tract and shedding bacteria in their feces [40–42]. Detailed investigations have shown that without proper cleaning methods and udder hygiene practices, feces can contaminate the teats and udders of animals and cause milk contamination during milking [43]. When STEC-contaminated milk is used to produce raw milk cheeses, STEC can survive and be isolated in some cheeses.

The pathogenesis of STEC-related disease generally involves three phases: (i) ingestion of contaminated food; (ii) colonization of the intestinal epithelium by STEC; and (iii) production of Shiga toxins (Stx) that disrupt normal cellular functions and damage cells. Stx are the main virulence factors of STEC. The Stx family includes all toxins with a similar structure and biological activity. Based on their different *in vitro* and *in vivo* toxicity, amino acid sequences, or nucleotide sequences of the *stx* genes, two major types of Shiga toxins, Stx1 and Stx2, and numerous variants (Stx1a to Stx1d and Stx2a to Stx2k) have been identified [44–47]. To effectively colonize a host and cause disease, STEC have evolved mechanisms and strategies for attaching or adhering to host cells and tissues [48]. Adhesion is required so that STEC cells are not swept away by the host's natural self-cleaning mechanisms. An arsenal of STEC surface adhesion factors have been described (Figure 1).



**Figure 1.** Schematic drawing of STEC adhesion factors and the bovine MFGM. STEC have an arsenal of protein structures involved in host cell adhesion. However, the adhesion mechanisms that contribute to the pathogenicity of STEC are not fully understood, and the receptors recognized by these adhesion factors are not all known. Nevertheless, some pili, autotransporters, and flagella can bind to host extracellular matrix (ECM) components such as fibronectin and laminin (glycoproteins). The MFGM is a complex trilayered structure, comprising a monolayer of polar lipids derived from endoplasmic reticulum (IM: inner membrane) and a bilayer of polar lipids originating from the apical plasma membrane of mammary secretory cells (OM: outer membrane). The structures drawn do not necessarily reflect the actual structures of the macromolecules and are not to scale. CM: Cytoplasmic membrane; PGN: Peptidoglycan; OM: Outer membrane; LPS: Lipopolysaccharide; LP: Lipoprotein; Tir: Translocated intimin receptor; T3SS: Type 3 secretion system; HCM: Host cytoplasmic membrane; CPS: Capsular polysaccharide; EPS: Extracellular polysaccharide; LpfA: Long polar fimbria subunit A; CsgA: Major curlin subunit; EcpA: *E. coli* common pilus subunit A; FmlA: Type-1 fimbria subunit A; ElfA: laminin-binding fimbria subunit A; SfpA: sorbitol-fermenting fimbria subunit A; FimH: Type 1 fimbria D-mannose specific adhesin; HcpA: Hemorrhagic coli pilus subunit A; SfaA: S-fimbria subunit A; AggB: Aggregative adherence fimbria I subunit B; YbgD: Putative fimbria Ybg subunit A; YehA: Putative fimbria Yeh subunit A; Cah: Calcium-binding antigen 43 homologue; AIDA-I: Adhesin

involved in diffuse adherence; Eha: Enterohaemorrhagic *E. coli* autotransporter; Ag43: Antigen 43; EspP: Extracellular serine protease plasmid encoded; EspC: EPEC-secreted protein C; PssA: Protease secreted by STEC; EibG: *E. coli* immunoglobulin-binding protein G; Saa: STEC autoagglutinating adhesion autotransporter; Sab: STEC autotransporter contributing to biofilm formation; Paa: porcine A/E-associated protein; Efa1: EHEC factor for adherence; Iha: IrgA homologue adhesin; OmpA: Outer membrane protein A; ToxB: Toxin B; Slp: Carbon starvation-inducible lipoprotein; FdeC: Factor adherence *E. coli*; GAPDH: Glyceraldehyde 3-phosphate dehydrogenase. MUC1/MUC15: Mucin 1/15; LDH: Lactadherin; ADPH: Adipophilin; BTN: Butyrophilin; XDH/XO: Xanthine dehydrogenase/oxidase; CD36: Cluster of differentiation 36; PP3: Proteose peptone 3; TAG: triacylglycerols.

The ability to adhere to the intestinal epithelium and colonize the intestine undeniably contributes to the pathogenic processes of STEC cells. Thus, the vast majority of clinical isolates known to cause bloody diarrhea or HUS have one or more virulence factors that allow their adhesion to intestinal epithelial cells [44]. The major adhesion factor of clinical STEC isolates is intimin [49], a protein encoded by the *eae* gene that resides in the locus of an enterocyte effacement pathogenicity island (LEE). The pathophysiology of clinical isolates possessing the *eae* gene is characterized by the development of enterocyte attachment-effacement (A/E) lesions. These lesions are responsible for the diarrhea observed in patients [49]. Intimin attachment to the host cell requires an upstream connection of the STEC cell to the host cell cytoplasm [48]. Intimin binds to the translocated intimin receptor (Tir) protein, which is encoded by STEC and translocated into the host cell cytoplasm using a type III secretion system (T3SS) and then inserted into the host cell membrane. Although STEC isolates carrying the *eae* gene represent the vast majority of human infections, some STEC lacking the *eae* gene have been isolated from patients [50,51]. An early adhesion phase involving other adhesion factors may occur before, or in parallel with, the formation of the highly specific intimin/Tir bond. Intimin can also bind, with less specificity and strength, to certain host cell surface components such as integrin and nucleolin, and this may contribute to STEC–host cell adhesion [52–54]. Some studies suggest involvement of the long polar fimbriae (LPF), which recognizes moieties of eukaryotic extracellular matrix (ECM) components [55,56]. Molecular characterization studies of STEC isolates have also identified *paa*, *efa1*, *ompA*, *saa*, *sab*, *toxB*, and *aggR* as genes encoding virulence factors involved in adhesion [57–59]. Flagella are also involved in STEC adhesion by binding to mucus and mucin proteins [60]. Other proteins can interact with immunoglobulins, for example, *E. coli* immunoglobulin-binding protein (Eib) [61,62]. The complete list of virulence factors, the timing of their expression, and the mechanisms involved in STEC pathogenicity are not yet fully known. Current knowledge of STEC surface proteins is summarized in Figure 1. STEC adhesion mechanisms are further detailed in these articles: [48,59,63].

### 2.3. Milk Fat Globules

MFGs can be distinguished from other forms of fat by the milk fat globule membrane (MFGM) that surrounds a core of triacylglycerols (TAGs) (Figure 1). Complex fat supramolecular organizations are also found in egg yolk or oilseeds in the form of oleosomes [64]. The MFGM is made of phospho- and sphingolipids, cholesterol, and proteins [65,66]. As a consequence of the mechanism of milk fat secretion from mammary epithelial cells, the MFGM is a complex trilayered structure, comprising a monolayer of polar lipids derived from the endoplasmic reticulum and a bilayer of polar lipids originating from the apical plasma membrane of the mammary secretory cells [67–69]. The MFG size is dependent on the origin of the milk. Bovine MFGs have a mean diameter of 4  $\mu\text{m}$ , while MFGs from goat (3.19  $\mu\text{m}$ ), camel (2.99  $\mu\text{m}$ ), and sheep raw milk (3.78  $\mu\text{m}$ ) are all smaller, and MFGs from buffalo (8.7  $\mu\text{m}$ ) are much larger [70]. The main MFGM (glyco)-proteins include glycoproteins mucin 1 and 15 (MUC1; MUC15), the redox enzyme xanthine dehydrogenase/oxidase (XDH/XO), butyrophilin (BTN), cluster of differentiation 36 (CD36), lactadherin (LDH); and two proteins: adipophilin (ADPH) and fatty-acid binding protein

(FABP) [29,71]. For a more complete description of MFGs and MFGM, we refer the reader to these articles: [69,72,73].

### 3. STEC in Raw Milk Cheeses

#### 3.1. Prevalence and Behavior of STEC in Raw Milk Cheeses

The most comprehensive studies on the prevalence of STEC in cheeses have been conducted in Europe and show that the prevalence of STEC varies from 0% to 13.1%, depending on the study [74]. In France in 2009, 2014, and 2018, surveillance plans assessed the prevalence of specific STEC isolates (*E. coli* possessing the *eae* and *stx* genes and belonging to O157:H7, O26:H11, O103:H2, O111:H8, and O145:H28 serotypes) in raw milk cheeses. These studies showed a prevalence of 0.9%, 0.2%, and 0.8% in the raw milk cheese studied in 2009, 2014, and 2018, respectively. In 2016, researchers in a French study evaluated the genetic diversity and virulence gene profiles of STEC isolated from dairy products [27]. They showed that the 197 studied isolates displayed a high genetic diversity regardless of their serotype, with Simpson's Diversity Index ranging from 1.0 to 0.9615. In addition, their results suggested that the virulence gene profiles of the dairy isolates are a potential hazard. Nevertheless, for the isolate most frequently found in dairy products, O26:H11 STEC, gene expression was similar between human and dairy isolates except for *stx1* (44% vs. 87%) and *stx2* (81% vs. 23%) expression. It is important to keep in mind that *Stx2* has stronger cytotoxicity than *Stx1* [75]. A French team showed that during the manufacture of different types of cheese experimentally contaminated with STEC strains, there was no statistically significant strain effect for the same serotype [76,77]. However, only a few different strains were tested for each serotype. Interestingly, a serotype effect was observed in certain types of cheese. Researchers observed less growth of the serotype O157:H7 strains than of the serotype O26:H11, O103:H2, and O145:H28 strains. They hypothesized that strains belonging to serotypes O26:H11, O103:H2, and O145:H28 could be more adapted to the conditions (physicochemical parameters and microbiota) encountered in cheeses.

#### 3.2. Impact of Cheese-Making Parameters on STEC and MFGs

The different processing steps applied and the origin of the raw milk used (e.g., cow, buffalo, goat, or sheep) can influence the behavior and survival of STEC [76]. The behavior of STEC (survival, growth, or inactivation) can also be influenced by temperature and by the intrinsic physicochemical properties (pH,  $a_w$ , and % lactic acid) of, and the other microflora present in, the raw milk microbiota and added starters used in different cheeses during their manufacture. At the initial stages of cheese-making, the temperature (around 30 °C) and  $a_w$  value of milk provide favorable conditions for the growth of STEC and an increase in STEC level by 1–3 log CFU/g can occur [76,77]. Then, the rapid acidification (pH > 4.3) encountered during the manufacture of certain cheeses can reduce STEC cell counts by 1–4 log CFU/g, depending on the STEC serotype and the type of cheese [76,78]. Various studies have shown that when ripening is long and, therefore, the  $a_w$  is low, STEC numbers decrease [76]. Nevertheless, while ripening can reduce the number of STEC cells, it cannot ensure the safety of the product if the raw milk is contaminated with STEC [79,80]. The environmental conditions during cheese processing generate stress for STEC, which can affect gene expression. Although little is known about the physiological state of STEC in cheese at different stages of production, it has been shown that the cheese-making process can trigger the production of *Stx* phages [81].

The various milk treatments for cheese processing also impact MFG and MFGM integrity and, consequently, the molecules involved in the MFGM–bacteria association [29,82]. Such treatments include high-temperature treatments [83,84], homogenization, and enzymatic reactions [85]. One must keep in mind that for raw milk cheeses, the curd is never heated above 54 °C. Heat treatments that kill or limit bacterial growth can also damage heat-sensitive compounds, such as glycoconjugates and associated oligosaccharides, located on the MFGM surface. Carbohydrate epitopes are well-known targets of bacte-

rial adhesion [86]. Homogenization reduces the diameter of MFGs (ranging from 0.1 to 0.5  $\mu\text{m}$  [82]) and increases the total MFGM surface area available to bacteria. Furthermore, homogenization can alter MFGM composition [84,85,87]. Treatments applied during cheese production may also alter the environment and the ability of STEC to adhere to the MFGM. In addition, physical forces applied in some cheese processing (e.g., pressed cheeses) can lead to detachment of the MFGM and their dispersion either in the product or in the whey, which will be eliminated. Nevertheless, glycoconjugates may remain intact through to end-consumption in non-pasteurized dairy products.

### 3.3. Location of STEC in Raw Milk Cheeses

Douëllou et al. used epifluorescence microscopy and a specific antibody coupled to FITC to assess bovine raw milk and concluded that both STEC strains assayed were localized near MFGs [88]. A natural raw milk creaming saturation assay with STEC revealed a strain-dependent tropism for the bovine raw milk cream layer and a distinct half-saturation point (8.5–9  $\log_{10}$  CFU.mL<sup>-1</sup>). Similar observations were presented by Brewster and Paul, suggesting that the cream layer exhibits a high capacity for *E. coli* O157:H7, *Listeria monocytogenes*, and *Salmonella enterica* [89]. Bacterial purification from milk by creaming seems to be not species-specific but rather general to bacteria.

The discrimination of specific bacteria in a complex product, such as raw milk cheese, is a true challenge. Furthermore, due to the modifications to milk and the MFG structure that occur during the cheese-making process, bacterial localization can vary. At the macroscopic scale, Miszczycha et al. showed that in experimentally inoculated cheeses, the levels of STEC strains belonging to serotypes O103:H2 and O145:H28 were statistically similar in the core and in the rind, regardless of the ripening conditions (traditional or industrial) [76]. The levels of serotype O26:H11 were also statistically similar in the rind. Bacterial localization in raw milk cheese has also been realized by morphologic observation on electronic micrographs [90–93] or by nonspecific DNA staining and assessment by fluorescent microscopy [90,94,95]. One study observed fluorescent mCherry-tagged *Lactobacillus reuteri* in raw milk [96]. However, to the authors' knowledge, no study focusing on the localization of STEC or other pathogenic bacteria during the cheese production process has been published.

At the microscopic scale, the localization of bacteria in other dairy products, such as fermented milk, is poorly documented. Overall, few studies have focused on the localization of STEC in dairy products. More work is needed to understand STEC behavior in raw milk cheeses and their interaction with MFGs. Based on the available literature describing other bacteria [95,97,98], STEC could potentially localize near MFGs, in serum pockets, or the protein network.

## 4. The Mechanism of STEC-MFG Association: What Do We Know?

### 4.1. General Information on Bacterial Adhesion

Bacterial adhesion is a complex process involving several factors, including: (i) surface-related properties (hydrophobicity, electrical charge, roughness, and topology); (ii) cell morphological properties (size, volume, dimension, and shape); (iii) the cell surface (chemical properties, envelope type, exposed proteins, and exopolysaccharide (EPS)); and (iv) the cell's ability to move [99]. Adhesion is a key step for bacteria (pathogenic or not), allowing colonization and growth at a host-specific site [100]. The bacterial adhesion process consists of two phases: a non-specific phase, involving physicochemical bonds, and a specific phase involving molecular factors exposed on both host and bacterial cell surface [101]. The STEC–MFG association can be seen as a host–bacteria adhesion facilitated by the origin of the MFGM and its similarities with the membrane of intestinal cells [29,68]. In this context, both biological membranes will interact together through surface components. Various glycoconjugates are anchored on the MFGM surface (Figure 2) and can act as ligands.



## 4.2. Physicochemical Interactions

Non-specific interactions have been described as the first step of adhesion, which is reversible and occurs rapidly (in the order of ~1 min) [102]. The process of initial bacterial adhesion is still not clearly understood, and physicians and microbiologists are working together to clarify the mechanisms. It is widely accepted that bacterial interaction is conducted according to the Derjaguin, Landau, Verwey, and Overbeek (DLVO) theory [103] and the extended DLVO theory [104]. The DLVO theory describes the force between charged surfaces interacting through a liquid. However, this theory may not be appropriate for modeling bacterial adhesion owing to the numerous processes involved and the influence of both biological and environmental factors (pH, ionic strength, and temperature) [105,106]. The non-specific phase of adhesion is a consequence of the balance between attractive and repulsive forces that are set up between the bacterium and the surface where it could adhere [107,108]. These forces include non-covalent interactions such as electrostatic interactions or surface charges, van der Waals forces, and Lewis acid/base interactions, as well as hydrophobic interactions [109,110]. Hydrophobic interactions and surface charges are the primary forces influencing bacterial adhesion [111].

### 4.2.1. Cell Surface Hydrophobicity

Bacterial cell surface hydrophobicity (CSH) is probably one of the major phenomena that governs bacterial attachment to a surface [109,110]. Hydrophobic interactions are defined as the ability of two elements of similar hydrophobicity to attract each other [112]. These forces are affected by the nature of their membrane-anchored components, including amino residues that are exposed to the extracellular environment [113]. In the context of STEC and MFGs, both are surrounded by a protein-rich membrane whose anchored surface components have polar properties (e.g., proteins and phospholipids) leading to weak hydrophobic repulsions [114,115]. Interestingly, Brisson et al. showed that the adhesion of *Lactobacillus reuteri* to MFGs was strain-dependent, and the more the strain was hydrophobic, the more it adhered [94].

### 4.2.2. Electrostatic Forces

Electrostatic forces result from the presence of a double ionic layer at the surface of a particle. The bacterial cell surface is generally negatively charged because of the carboxyl and phosphate core as well as the lipopolysaccharide (LPS) located at the surface [116]. *E. coli* surface charge is between  $-30$  and  $-45$  mV at milk pH [117,118]. While there are no published STEC-specific surface charge data generated with a modern instrument, some studies have shown that STEC isolates or reference strains are weakly negative [119,120]. Native MFGs are negatively charged due to the high phospholipid content of the outer layer of the MFGM [121]. The  $\zeta$ -potential of native MFGs is close to  $-13$  mV [122–124]. Furthermore, Malik et al. showed that the MFGM fraction could reach  $-20$  mV at pH 6.5 [125]. When a negative surface meets another negative surface, repulsive forces are produced. Thus, in theory, MFGs and STEC should repel each other. However, it is important to note that the bacterial surface charge should be measured in an appropriate buffer that mimics the properties of raw milk, such as milk ultrafiltration permeate. There is a lack of recent experimental data with appropriate physicochemical conditions to assess the involvement of these forces in the association of STEC with MFGs.

### 4.2.3. Van der Waals Forces

Van der Waals interactions are long-range attractive forces present in both polar and non-polar molecules and come mainly from the fluctuation of the internal charge of a particle. These forces are generally attractive and result from induced dipole interactions between molecules in a colloidal particle and a substrate [126]. Attractive van der Waals forces are ubiquitous between molecules [127] and could explain part of the interaction between bacteria and the MFGM. However, van der Waals interactions in MFGM–bacteria adhesion have not been studied.

#### 4.2.4. Lewis Acid/Base Interactions

The Lewis acid/base interaction is a polar interaction where acceptor/donor electrons enable the formation of hydrogen bonds also known as Lewis bonds [128]. This link occurs whenever ligands of strong electronegativity are associated with hydrogen. These short-range bonds are strong electrostatic interactions. Kiely and Olson showed that *L. casei* strains and MFGs behaved as electron donors and could mediate bonds [129,130]. However, the role of Lewis bonds in MFGM–bacteria adhesion was not fully investigated.

#### 4.3. Specific Molecular Interactions

Bacterial molecules involved in adhesion, called adhesins, recognize specific oligosaccharide moieties or peptide residues on the surface of target cells. There are many different adhesins, including porins, complex protein structures, glycoproteins, and glycolipids. Three main types of adhesin–receptor interactions have been described: lectin–glycan; protein–protein; and hydrophobin–protein [131]. Lectins are key factors in bacterial adhesion mechanisms [132–134]. Lectins are adhesins that recognize glycoconjugates, the sugar epitopes generally associated with proteins or lipids. Glycoconjugates are polymeric carbohydrates composed of monosaccharides arranged in chains and preferentially present on the external leaflet either attached to lipids or proteins [135]. Commonly, the polysaccharides of glycoconjugates are referred to as the ‘glycan layer’ or ‘glycocalyx’ [136]. The glycocalyx is directly exposed to the environment, allowing interactions with other cells to facilitate cell communication, immune regulation, and adhesion [137].

A wide range of STEC isolates can be responsible for human infections, and these can be genetically different [138]. However, regardless of the strain or serogroup, STEC possess virulence factors (Figure 1) that allow attachment to intestinal epithelial cells (IECs), and these adhesion factors are generally considered essential for infection. A large range of polysaccharides exists, but only a subset is exposed at the cell surface where they can be recognized by complementary receptors. Adhesins can be found at the distal end of bacterial pili (or fimbriae). These are bacterial extracellular appendages approximately 1 to 20 µm long and <2 to 10 nm in diameter [139]. Other adhesins are anchored directly in the biological membrane of bacteria and are referred to as afimbrial adhesins [59,63].

##### 4.3.1. MFGM as a Decoy Receptor for STEC

Douëllou et al. showed that raw milk reduced the adhesion of two STEC strains (O157:H7 str. EDL933 and O26:H11 str. 21765) to intestinal cells in vitro and in vivo, whereas pasteurized milk did not [88]. Furthermore, Brewster and Paul showed that more than 98% of the pathogenic bacteria (including STEC) added to pasteurized or homogenized milk were recovered in the pellet after centrifugation, while less than 7% were recovered from raw milk, suggesting that processing could weaken the MFG–bacteria association [89]. Another study demonstrated that only MFGM proteins and glycoproteins inhibited *E. coli* adhesion in the Caco-2/HT-28 model [140]. In addition, Ross et al. suggested that the anti-infective activity of MFGM is due to the interaction of bacteria with MFGM proteins and glycoproteins rather than the interaction between MFGM and host cell receptors. In addition, modifications to MFGM surfaces such as surface roughness, zeta potential, MFG size, and phospholipid content can drastically impair the adhesive properties of *L. fermentum* [124]. The MFGM can also inhibit ETEC hemagglutination, suggesting that similar motifs are present on both membranes [141].

##### 4.3.2. MFGM Proteins and Glycoproteins Potentially Targeted by STEC

No published studies have focused on which MFGM proteins are recognized by STEC or which adhesins are involved. However, studies have been conducted on other bacterial models (mostly beneficial). Guerin et al. used atomic force microscopy (AFM) to show that the spaCBA pili of *L. rhamnosus* engaged with the MFGM. Another experiment conducted by Novakovic et al. demonstrated, by blot overlay, binding of the ETEC F4ac pili to various porcine MFGM or milk proteins, including lactadherin, butyrophilin,

adipophilin, acyl-CoA synthetase 3, and fatty acid-binding protein 3 [142]. An extensive literature search highlighted several MFGM proteins or glycoproteins that could interact with bacteria (Table 1). As an example, Zg16 can bind peptidoglycan [143]. Milk whey proteins such as lactoferrin,  $\beta$ -lactoglobulin, and  $\alpha$ -lactalbumin can be adsorbed on the MFGM by heat treatment [144,145] and can be bound by bacteria. Glycoproteins such as mucins (MUC1 and MUC15), CD59, ECM proteins (tenascin, vitronectin), butyrophilin, prolactin-inducible protein (mPIP), CD36, and alpha1-antichymotrypsin can be bacterial lectin targets (Table 1). Among this non-exhaustive list, mucins could well be potential targets for STEC. Mucins are highly glycosylated proteins known to adhere to bacteria. Mucins constitute mucus, a secreted gel that binds the intestinal microbiota and protects the epithelium from pathogens [146,147]. Additionally, EF-Tu, a ubiquitous bacterial protein that can bind many proteins and mediate adhesion, could potentially interact with the MFGM [148].

**Table 1.** MFGM proteins or glycoproteins that are potentially bound by STEC.

Bovine MFGM Components	Bacterial Components	References
Adipophilin * (ADPH)	F4ac ( <i>E. coli</i> ) fimbria	[142]
Alpha 1-antichymotrypsin (serpin)	-	[149]
Annexins A1, A2, A5	LPS (lipid A), OmpB, YadC (tip adhesin of Yad fimbriae)	[150–152]
Apolipoprotein serum amyloid A protein	OmpA	[153]
Apolipoproteins	LPS	[154,155]
Butyrophilin *	F4ac ( <i>E. coli</i> ) fimbria	[29,142]
Calnexin	LPS, peptidoglycan	[156]
Cathelicidin 1	LPS, LTA	[157]
CD36 *	LPS, LTA	[29,158]
CD5L protein	-	[159]
Elongation factor thermal unstable Tu (EF-Tu)	-	[148]
Fatty acid-binding protein *	F4ac ( <i>E. coli</i> ) fimbria	[142]
Fibrinogen	Fibrinogen-binding protein (MSCRAMMs), curli	[160–165]
Galectin 7	LPS	[166]
Gelsolin	LPS, LTA	[167]
Immunoglobulins	Many bacterial proteins	-
Integrin	Many bacterial proteins	[52,165,168–171]
Lactadherin *	F4ac ( <i>E. coli</i> ) fimbria	[142,172]
Lactoferrin	OMPs	[173]
Macrophage scavenger receptor	LPS, LTA	[174]
MUC1 *, MUC15 *	Many bacterial proteins	[175]
Polymeric immunoglobulin receptor (PIgR)	Ig-mediated adhesion, direction interaction via adhesin	[176,177]
Prolactin-inducible protein (mPIP)	-	[178,179]
Peptidoglycan recognition protein 1	-	[180]
Protein disulfide-isomerase (PDI)	-	[181]
Toll-like receptor 4, 2	Many bacterial proteins	[182–185]
Uromodulin	Surface layer protein A, FimH	[186,187]
Vimentin	Many bacterial proteins	[188]
Vitronectin	Many bacterial proteins	[189]
Zymogen granule protein 16 homolog B	LTA, peptidoglycan	[190]
$\beta$ -lactoglobulin	Spa pili	[191,192]

MFGM proteins were obtained from [33,193,194]. \* Major MFGM proteins.

Besides proteins, a strain-specific adhesion between milk phospholipids (MPLs) and lactic acid bacteria (LAB) has been shown [195,196]. D’Incecco et al. showed that in the case of the presence of *Clostridium tyrobutyricum* spores in raw milk, these spores can be localized at the proximity of MFGs [90]. Like bacteria, the spore’s surface is decorated by polysaccharides and anchored extracellular appendages that mediate lectin–carbohydrate interactions [197,198]. However, the surface structure of *Clostridium tyrobutyricum* spores involved in the association with MFG was not identified in the study. Interestingly, further

experiments conducted by D’Incecco et al. used transmission electron microscopy (TEM) to show that *C. tyrobutyricum* interacted with the MFGM through an amorphous substance containing IgA [199].

Milk provides not only nutrients but also protection to newborns through immunocompetent cells, antimicrobial peptides, oligosaccharides, immunoglobulins (Igs), cytokines, growth factors, and lysosomes [200]. Bovine MFGs contain numerous immune-related proteins including proteins with bacterial binding capacities. Immune proteins are well characterized and known to recognize specific epitopes on pathogens. Immunoglobulins and immune cells in milk reflect the mother’s pathogen exposure and can provide immunity against some pathogens. Studies have shown that IgA, secreted-IgA (sIgA), and IgM are concentrated in the cream layer and can adsorb onto human [201,202] or bovine [90] MFGM surfaces. These adsorbed Igs may act as mediators of bacterial adherence to MFGs. Other studies have demonstrated the efficacy of bovine Igs against various human pathogens related to diarrhea [203–205]. Antibodies against pathogenic *E. coli* are common in samples of human milk [206,207]. Several studies have also shown that bovine colostrum contains antibodies to *E. coli* O157:H7 and other pathogens, regardless of whether the animals were immunized (vaccinated) or not. These antibodies can confer protection against relevant pathogens to humans [208–210]. Oliveira et al. showed that Igs could interact with ETEC fimbrial proteins and block adhesion to host receptors [211]. It has also been reported that K88-positive *E. coli* adhere to MFGs through IgA [212].

The spontaneous agglutination of MFGs in cold milk is due to the presence of immunoglobulins, called cryoglobulins [213]. Cryoglobulins are large molecules that precipitate at low temperatures (<37 °C) and disperse again on warming. Cryoglobulins are probably involved in bacterial clarification during natural creaming [214]. Immunoglobulin cell receptors are present on both the bacterial surface and MFGMs and, therefore, could act as a bridge. A generic IgG receptor is present in cold-stored MFGM preparations, but bacterial interaction has not been shown [215]. The polymeric immunoglobulin receptor (pIgR) is present on intestinal epithelial cells and facilitates the transcytosis of Igs, especially IgA, and immune complexes [177,216].

Toll-like receptors 2 and 4 (TLR2 and TLR4), which recognize foreign antigens, are present at low levels on MFGMs [33]. For example, FimH, the adhesive tip from the Type 1 fimbriae of *E. coli*, binds to mannose, TLR4, and CD48 [183,217]. Furthermore, TLR2 recognizes lipoteichoic acid (LTA), peptidoglycan, lipoprotein, curli, and other pathogen-associated molecular patterns (PAMPs) [184,185,218]. CD36 is a scavenger receptor that binds lipopolysaccharide (LPS) and other ligands [219]. Cathelicidins are antimicrobial peptides that can bind LPS [157]. Peptidoglycan recognition protein 1 (PRP1) is an antibacterial protein that can kill Gram-positive bacteria by binding to peptidoglycans and interfering with peptidoglycan biosynthesis [180].

## 5. Consequences of the STEC–MFG Association

### 5.1. Difficulties in Detecting STEC in Raw Milk Products

STEC detection in food matrices classically relies on four different steps: sample preparation; enrichment; detection; and confirmation by bacterial isolation. The enrichment step consists of adding an enrichment broth to the matrix to enable growth of the target bacteria. In the detection step, a genetic method is implemented to detect the presence of target bacteria by PCR screening. Finally, the confirmation step is carried out. This confirmation is based on isolation of target bacteria grown on selective media. Immunoconcentration tools using magnetic beads spiked with antibodies can also be used in this step. The ISO TS13136:2012 is the standard currently used to detect and isolate STEC belonging to O157, O26, O103, O111, and O145 serogroups and carrying *eae* and *stx* genes in food samples.

STEC detection in raw milk cheeses is particularly challenging. First, bacterial DNA is extracted from a specific volume of enrichment broth. Then, STEC target genes (*eae*, *stx*, and genes encoding one of the five somatic antigens) are detected. However, the microflora of cheese contains bacteria that carry some of the genes used to screen for STEC. For example,

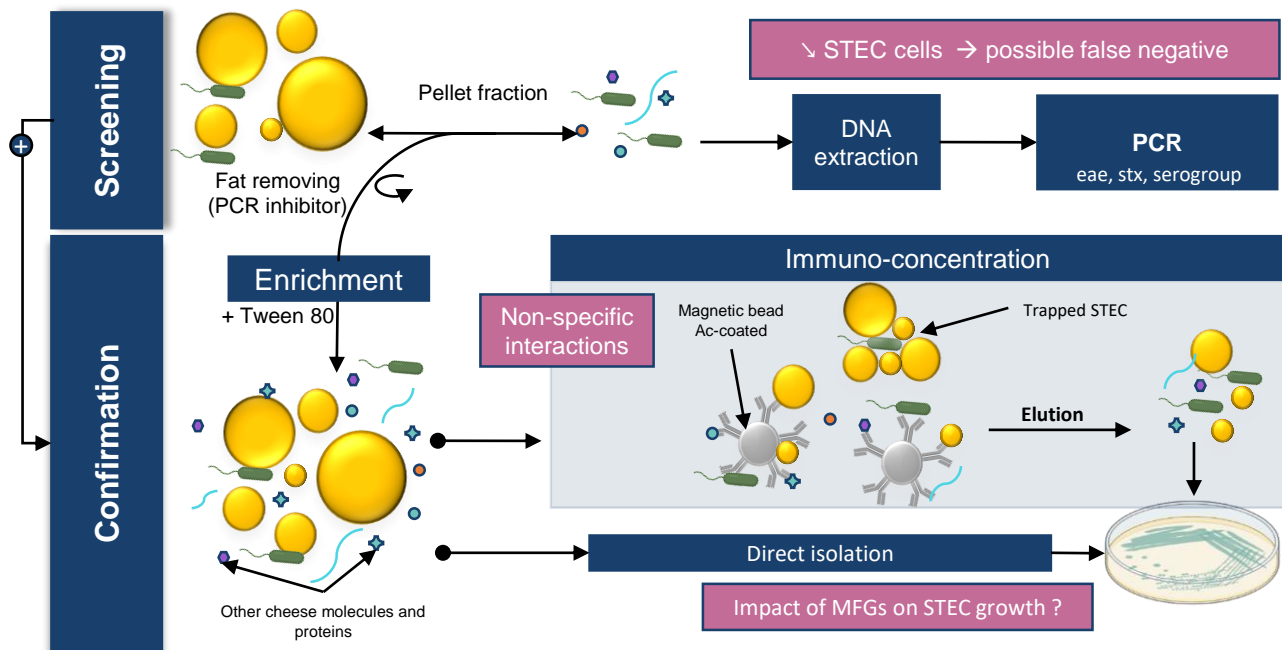
some non-STEC strains of *E. coli* (such as enteropathogenic *E. coli* (EPEC)) carry the *eae* gene or contain phages carrying the *stx* gene. Some other bacterial strains can also carry the *stx* gene, including *Citrobacter freundii*, *Shigella* spp., *Acinetobacter*, *Aeromonas* spp., *Hafnia alvei*, *Escherichia albertii*, *Escherichia cloacae*, and enterotoxigenic *E. coli* (ETEC) [44]. The presence of these bacteria in raw milk cheese can lead to positive PCR results even though STEC isolates are not present in the enrichment broth (false positives). Furthermore, the performance of the methods (LOD) varies depending on the methods used and the matrices analyzed.

In general, STEC detection is more difficult in cheese than in meat. The LODs of the different detection methods are approximately 5–10 cells/g and 10–50 cells/g for bovine meat and raw milk cheese, respectively [220,221]. The presence of a richer flora and a higher amount of fat in cheese compared with meat may be an explanation. As discussed above, bacteria are preferentially found in contact with MFGs in raw milk products; however, the available detection kits perform DNA extraction on the pelleted fraction. Moreover, MFGs can interfere with DNA extraction methods by blocking spin column filters and acting as a PCR inhibitor [222,223]. Lower efficiency of bacterial DNA extraction can lead to false negative PCR results from enrichment broth samples. Several authors have described this phenomenon for various milk origins and suggest performing the extraction on both the cream and pelleted fraction. Sun et al. showed that cream harbors bacterial species that may be underestimated when skimmed milk, rather than whole milk, is used for DNA extraction [96]. Stinson et al. showed that a significant amount of human and bacterial cells remains with the cream and that bacterial DNA profiles can vary between fractions, especially for staphylococcal species [223]. The authors suggested that high-speed centrifugation may be insufficient to pellet bacterial or eukaryotic cells from milk. Furthermore, MFGs and proteins such as caseins can disrupt the interaction between immunomagnetic beads and STEC during the confirmation step. Tween 20 can be added at this stage to improve sample homogenization and block non-specific interactions [224].

Finally, STEC isolation to confirm the presence of the bacteria is also very difficult in raw milk cheese because the cheese microbiota limits STEC growth on agar plates. In addition, the different challenges encountered during cheese processing as well as the stresses suffered by STEC during the detection protocol can lead to viable but nonculturable (VBNC) isolates [225].

These studies emphasize the importance of using whole milk instead of skimmed milk for DNA extraction, but MFGs can perturb downstream applications. To improve the recovery rate of STEC in raw milk products, it seems essential to identify the nature of the STEC–MFG association in order to dissociate the two before performing the detection process. The identification of milk components involved in PCR inhibition and the improvement of DNA purification methods would allow the development of new kits to extract bacterial DNA from milk and cream. It should be noted that, despite these limitations, available DNA kits are still very effective. Quigley et al. showed that commercial kits provided very pure DNA suitable for PCR amplification from raw milk and raw milk cheese [226]. Furthermore, ISO 6887 recommends the addition of Tween 80 when enriching high-fat matrix to improve detection and bacterial isolation. However, no formal study has shown a significant effect due to the addition of Tween 80. Finally, at the enrichment temperature (37 °C or 41.5 °C), the lipids form a surface layer that may contain the desired bacterial cells and contribute to the reduction of available oxygen and thus modify the physiological state of the bacteria.

Figure 2 brings together the different concepts discussed in this section.



**Figure 2.** Impact of MFGs on STEC detection in dairy matrix. STEC detection in food matrices classically relies on 4 different steps: sample preparation; enrichment; detection; and confirmation by bacterial isolation.

### 5.2. Impact of Creaming on the Presence of STEC in Milk

One of the industry's goals should be a non-invasive method to eliminate pathogenic bacteria in raw milk without affecting the nutritional qualities and raw milk microbiota of the final product. Many techniques exist, such as bactofugation and microfiltration, [227], but these techniques affect MFG structure [82] and also remove the raw milk microflora. In our lab, we performed a raw milk skimming assay by electric centrifuge, and *E. coli* were not found in significant numbers in the cream fraction [228]. Stronger centrifugal forces are applied by the centrifuge; therefore, the STEC–MFG association is probably too weak to overcome the centrifugal forces. However, it was reported that natural creaming produces reduced-fat milk with a lower bacterial count and fewer somatic cells [229]. MFGs spontaneously rise to the surface due to the difference in density between MFGs and the aqueous phase (Stokes' law) [230]. As previously discussed, STEC were predominantly found in the cream layer after raw milk creaming [88]. Therefore, performing natural creaming methods before cheese transformation could decrease the level of STEC in the final product. However, no study has been conducted in experimental field conditions (with low STEC contamination levels).

### 5.3. Anti-Adhesive Strategies

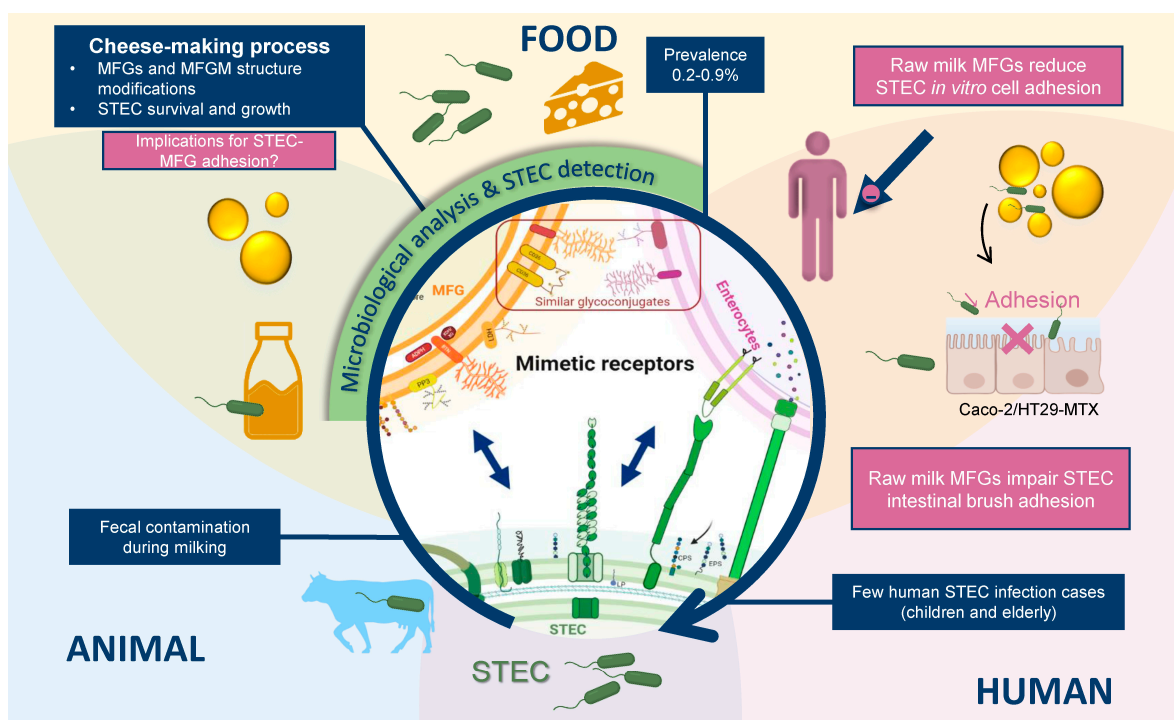
As bacterial adhesion is the first step of infection, inhibiting this step is a key strategy for infection control. Competition for the natural binding sites of pathogenic bacteria by mimetic receptors could inhibit pathogen attachment. Several natural food components could act as efficient inhibitors of pathogen adherence [30,100,231–233], especially milk components [29,234]. Moreover, numerous experimental studies have shown that the association of bacteria with MFGs could prevent the adhesion of several enteropathogens to enterocytes through mimetic receptors [142,172,235–240]. To avoid STEC adhesion to the epithelium of the intestinal mucosa, the STEC–MFG complex must be maintained at the site of STEC adhesion. Therefore, the expression of STEC genes involved in adhesion must be able to occur in product and during the human digestive process.

MFGM glycoconjugates are the main macromolecules involved in the anti-adhesive properties of milk against enteropathogens [29,73]. The MFGM protein fraction shows similarities to intestinal cells. Major MFGM proteins are conserved between species, although there are variations in protein expression levels and molecular functions between species and stages of lactation [241]. The MFGM was recently recognized as a high value-added ingredient, and the valorization of this by-product is constantly increasing. The MFGM, or some of its components, are added to infant milk formulas because of the MFGM's beneficial properties [241–245]. More studies should be conducted to identify the MFGM surface glyco-epitopes recognized by STEC. These data could lead to pharmaceutical development of a specific drug to treat STEC infections. Currently available therapeutic solutions for STEC are controversial.

## 6. Conclusion and Future Directions

MFGs can associate with beneficial and pathogenic bacteria, including STEC. To date, we do not have sufficient evidence to confirm the adhesion of STEC to bovine MFGs and more specifically to the MFGM. However, the research discussed in this review highlights a real association between STEC and MFGs that impacts bacterial pathogenicity (Figure 3). Based on studies with other bacterial models, STEC adhesion factors may adhere to MFGM glycoconjugates, resulting in impaired bacterial adhesion to host cells. The association mechanisms remain unclear, but several phenomena are likely to be involved. The large diversity of STEC isolates and the complexity of bacterial adhesion make it difficult to study these mechanisms. Few studies have assessed STEC adhesion to the glycoconjugates contained in raw milk products. We need to better understand the mechanisms of this adhesion, including the molecular factors involved and the binding strength. Therefore, it is important to identify and better characterize STEC adhesion factors and their implication in the infection cycle. In addition, more complete studies should be conducted to elucidate the location of this pathogen in raw milk cheese products and how the STEC–MFG association changes once the product is ingested by humans. To ensure inhibition of STEC adhesion to enterocytes, the STEC–MFG complex must be resistant to human digestive processes.

Research on the anti-adhesive properties of bovine MFGM components is recent and needs to be further pursued as a new source of antibacterial molecules. In the long-term, specific (glyco)-proteins derived from the MFGM could be developed as preventive or therapeutic tools against STEC or other enterobacteria. Nevertheless, bacteria–MFG adhesion is not specific to STEC and can lead to contrasting effects depending on the bacterial species involved. For STEC or other pathogenic bacteria, the association has an overall health benefit by reducing bacterial adhesion to host cells. In contrast, reducing the adhesion of beneficial bacteria or probiotics may not be as beneficial. Parallel studies using various bacterial models would improve our understanding of this phenomenon and may help to identify a molecule that inhibits unwanted adhesions, while preserving beneficial microflora adhesion. In addition, anti-adhesive molecule(s) could be used to improve STEC detection in dairy matrices. MFGs can affect the detection process and decrease the chances of isolating bacteria from a suspect product. Finally, the influence of the interaction of dairy matrix and specific components such as MFGM on the regulation of STEC virulence genes should be studied.



**Figure 3.** MFGM as an anti-adhesive modulator of STEC. Ruminants (cattle, buffalo, goats, and sheep) are the main reservoir of STEC. Infected ruminants harbor the bacteria in their gastrointestinal tract without any symptoms of illness and shed them in their feces. Raw milk can reduce the adhesion of STEC strains to host intestinal cells. The association of STEC with MFGs can be seen as a host–bacteria adhesion facilitated by the epithelial origin of the MFGM and its similarities with the membrane of intestinal cells. Both biological membranes interact through surface components. Various glycoconjugates are anchored on the MFGM surface and can act as ligands. The molecules involved in the association have not been identified.

**Author Contributions:** Conceptualization, A.B. and D.S.; writing—original draft preparation, A.B. and D.S.; visualization, A.B.; funding acquisition, D.S. All authors have read and agreed to the published version of the manuscript.

**Funding:** This research was funded by the Centre National Interprofessionnel de l’Economie Laitière (CNIEL, French Dairy Interbranch Organization, Paris) and VetAgro Sup.

**Data Availability Statement:** Not applicable.

**Acknowledgments:** Figures created with BioRender.com and Microsoft Office. The authors thank Leah Cannon, for English language editing of this manuscript.

**Conflicts of Interest:** The authors declare no conflict of interest.

## References

1. CNIEL Laits Liquides. Available online: <https://www.filiere-laitiere.fr/fr/laits-liquides> (accessed on 5 January 2022).
2. International Dairy Federation. *IDF Annual Report*; International Dairy Federation: Schaerbeek, Belgium, 2021.
3. Jost, R. Milk and Dairy Products. *Ullmann’s Encycl. Ind. Chem.* **2007**, *23*, 315–375.
4. CNIEL Fromages. Available online: <https://www.filiere-laitiere.fr/fr/fromages> (accessed on 12 January 2022).
5. Quigley, L.; O’Sullivan, O.; Stanton, C.; Beresford, T.P.; Ross, R.P.; Fitzgerald, G.F.; Cotter, P.D. The Complex Microbiota of Raw Milk. *FEMS Microbiol. Rev.* **2013**, *37*, 664–698. [[CrossRef](#)] [[PubMed](#)]
6. Skeie, S.B.; Håland, M.; Thorsen, I.M.; Narvhus, J.; Porcellato, D. Bulk Tank Raw Milk Microbiota Differs within and between Farms: A Moving Goalpost Challenging Quality Control. *J. Dairy Sci.* **2019**, *102*, 1959–1971. [[CrossRef](#)] [[PubMed](#)]
7. Machado, S.G.; Baglinière, F.; Marchand, S.; Van Coillie, E.; Vanetti, M.C.D.; De Block, J.; Heyndrickx, M. The Biodiversity of the Microbiota Producing Heat-Resistant Enzymes Responsible for Spoilage in Processed Bovine Milk and Dairy Products. *Front. Microbiol.* **2017**, *8*, 302. [[CrossRef](#)] [[PubMed](#)]



8. Lucey, J.A. Raw Milk Consumption: Risks and Benefits. *Nutr. Today* **2015**, *50*, 189–193. [CrossRef]
9. Crippa, G.; Zabzuni, D.; Bravi, E.; Piva, G.; De Noni, I.; Bigli, E.; Rossi, F. Randomized, Double Blind Placebo-Controlled Pilot Study of the Antihypertensive Effects of Grana Padano D.O.P. Cheese Consumption in Mild—Moderate Hypertensive Subjects. *Eur. Rev. Med. Pharmacol. Sci.* **2018**, *22*, 7573–7581. [CrossRef]
10. Loss, G.; Apprich, S.; Waser, M.; Kneifel, W.; Genuneit, J.; Büchele, G.; Weber, J.; Sozanska, B.; Danielewicz, H.; Horak, E.; et al. The Protective Effect of Farm Milk Consumption on Childhood Asthma and Atopy: The GABRIELA Study. *J. Allergy Clin. Immunol.* **2011**, *128*, 766–773.e4. [CrossRef]
11. PASTURE Project Protection against Allergy: Study in Rural Environments. Available online: <https://cordis.europa.eu/project/id/QLK4-CT-2001-00250/fr> (accessed on 5 January 2022).
12. French Ministry of Agriculture and Food Consumption of Cheeses Made from Raw Milk: Reminder of the Precautions to Take. Available online: <https://agriculture.gouv.fr/consommation-de-fromages-base-de-lait-cru-rappel-des-precautions-prendre> (accessed on 18 October 2021).
13. Baylis, C.L. Raw Milk and Raw Milk Cheeses as Vehicles for Infection by Verotoxin-Producing *Escherichia Coli*. *Int. J. Dairy Technol.* **2009**, *62*, 293–307. [CrossRef]
14. Currie, A. Outbreak of *Escherichia Coli* O157:H7 Infections Linked to Aged Raw Milk Gouda Cheese. *J. Food Prot.* **2018**, *81*, 325–331. [CrossRef]
15. Espié, E.; Mariani-Kurkdjian, P.; Grimont, F.; Pihier, N.; Vaillant, V.; Francart, S.; Capek, I.; De Valk, H.; Vernozzy-Rozand, C. Shiga-Toxin Producing *Escherichia Coli* O26 Infection and Unpasteurised Cows Cheese, France, 2005. In Proceedings of the 6th International Symposium on STEC, Melbourne, Australia, 30 October 2006.
16. FAO; WHO. *Attributing Illness Caused by Shiga Toxin-Producing Escherichia Coli (STEC) to Specific Foods*; FAO: Rome, Italy, 2019.
17. Honish, L.; Predy, G.; Hislop, N.; Chui, L.; Kowalewska-Grochowska, K.; Trottier, L.; Kreplin, C.; Zazulak, I. An Outbreak of *E. Coli* O157:H7 Hemorrhagic Colitis Associated with Unpasteurized Gouda Cheese. *Can. J. Public Health* **2005**, *96*, 182–184. [CrossRef]
18. Mungai, E.A.; Behraves, C.; Gould, L. Increased Outbreaks Associated with Nonpasteurized Milk, United States, 2007–2012. *Emerg. Infect. Dis.* **2015**, *21*, 119–122. [CrossRef] [PubMed]
19. Perrin, F.; Tenenhaus-Aziza, F.; Michel, V.; Mischczycha, S.; Bel, N.; Sanaa, M. Quantitative Risk Assessment of Haemolytic and Uremic Syndrome Linked to O157:H7 and Non-O157:H7 Shiga-Toxin Producing *Escherichia Coli* Strains in Raw Milk Soft Cheeses. *Risk Anal.* **2015**, *35*, 109–128. [CrossRef] [PubMed]
20. Treacy, J. Outbreak of Shiga Toxin-Producing *Escherichia Coli* O157:H7 Linked to Raw Drinking Milk Resolved by Rapid Application of Advanced Pathogen Characterization Methods. *Eurosurveillance* **2019**, *24*, 1800191. [CrossRef] [PubMed]
21. Etcheverría, A.I.; Padola, N.L. Shiga Toxin-Producing *Escherichia Coli*. *Virulence* **2013**, *4*, 366–372. [CrossRef] [PubMed]
22. AFFSA. *Bilan des Connaissances Relatives Aux Escherichia Coli Producteurs de Shiga-Toxines (STEC)*; French Food Safety Agency: Maisons-Alfort, France, 2003; p. 220.
23. EU Directorate-General for Health and Food Safety RASFF. Available online: <https://webgate.ec.europa.eu/rasff-window/screen/search> (accessed on 2 February 2022).
24. EFSA. The European Union One Health 2018 Zoonoses Report. *EFSA J.* **2019**, *17*, e05926. [CrossRef]
25. EFSA. The European Union One Health 2019 Zoonoses Report. *EFSA J.* **2021**, *19*, e06406. [CrossRef]
26. EFSA. The European Union One Health 2020 Zoonoses Report. *EFSA J.* **2021**, *19*, e06971. [CrossRef]
27. Douëllou, T.; Delannoy, S.; Ganet, S.; Mariani-Kurkdjian, P.; Fach, P.; Loukiadis, E.; Montel, M.; Thevenot-Sergentet, D. Shiga Toxin-Producing *Escherichia Coli* Strains Isolated from Dairy Products—Genetic Diversity and Virulence Gene Profiles. *Int. J. Food Microbiol.* **2016**, *232*, 52–62. [CrossRef]
28. Claeys, W.L.; Cardoen, S.; Daube, G.; De Block, J.; Dewettinck, K.; Dierick, K.; De Zutter, L.; Huyghebaert, A.; Imberechts, H.; Thiange, P.; et al. Raw or Heated Cow Milk Consumption: Review of Risks and Benefits. *Food Control* **2013**, *31*, 251–262. [CrossRef]
29. Douëllou, T.; Montel, M.C.; Thevenot Sergentet, D. Invited Review: Anti-Adhesive Properties of Bovine Oligosaccharides and Bovine Milk Fat Globule Membrane-Associated Glycoconjugates against Bacterial Food Enteropathogens. *J. Dairy Sci.* **2017**, *100*, 3348–3359. [CrossRef]
30. Ofek, I.; Hasty, D.L.; Sharon, N. Anti-Adhesion Therapy of Bacterial Diseases: Prospects and Problems. *FEMS Immunol. Med. Microbiol.* **2003**, *38*, 181–191. [CrossRef]
31. Yoon, Y.; Lee, S.; Choi, K.-H. Microbial Benefits and Risks of Raw Milk Cheese. *Food Control* **2016**, *63*, 201–215. [CrossRef]
32. Kosmerl, E.; Rocha-Mendoza, D.; Ortega-Anaya, J.; Jiménez-Flores, R.; García-Cano, I. Improving Human Health with Milk Fat Globule Membrane, Lactic Acid Bacteria, and Bifidobacteria. *Microorganisms* **2021**, *22*, 341. [CrossRef] [PubMed]
33. Reinhardt, T.A.; Lippolis, J.D. Bovine Milk Fat Globule Membrane Proteome. *J. Dairy Res.* **2006**, *73*, 406–416. [CrossRef]
34. Spitsberg, V.L. Invited Review: Bovine Milk Fat Globule Membrane as a Potential Nutraceutical. *J. Dairy Sci.* **2005**, *88*, 2289–2294. [CrossRef]
35. CNIEL. *L'économie Laitière en Chiffre-Edition 2021*; CNIEL: Paris, France, 2021; p. 204.
36. Insée Principales Caractéristiques Des Entreprises En 2017—Caractéristiques Comptables, Financières et d'emploi Des Entreprises En 2017 | Insee. Available online: <https://www.insee.fr/fr/statistiques/4226019?sommaire=4226092#consulter-sommaire> (accessed on 10 January 2022).

37. CNIEL Centre National Interprofessionnel de l'Economie Laitière. Available online: <https://www.filiere-laitiere.fr/fr/> (accessed on 12 January 2022).
38. Karmali, M.A.; Gannon, V.; Sargeant, J.M. Verocytotoxin-Producing *Escherichia Coli* (VTEC). *Vet. Microbiol.* **2010**, *140*, 360–370. [[CrossRef](#)]
39. Salaheen, S.; Kim, S.W.; Cao, H.; Wolfgang, D.R.; Hovingh, E.; Karns, J.S.; Haley, B.J.; Van Kessel, J.A.S. Antimicrobial Resistance Among *Escherichia Coli* Isolated from Veal Calf Operations in Pennsylvania. *Foodborne Pathog. Dis.* **2019**, *16*, 74–80. [[CrossRef](#)]
40. Brown, C.A.; Harmon, B.G.; Zhao, T.; Doyle, M.P. Experimental *Escherichia Coli* O157:H7 Carriage in Calves. *Appl. Environ. Microbiol.* **1997**, *63*, 27–32. [[CrossRef](#)]
41. Chapman, P.A.; Cerdán Malo, A.T.; Ellin, M.; Ashton, R.; Harkin, M.A. *Escherichia Coli* O157 in Cattle and Sheep at Slaughter, on Beef and Lamb Carcasses and in Raw Beef and Lamb Products in South Yorkshire, UK. *Int. J. Food Microbiol.* **2001**, *64*, 139–150. [[CrossRef](#)]
42. Sarimehmetoglu, B.; Aksoy, M.H.; Ayaz, N.D.; Ayaz, Y.; Kuplulu, O.; Kaplan, Y.Z. Detection of *Escherichia Coli* O157:H7 in Ground Beef Using Immunomagnetic Separation and Multiplex PCR. *Food Control* **2009**, *20*, 357–361. [[CrossRef](#)]
43. Ruegg, P.L. Practical Food Safety Interventions for Dairy Production. *J. Dairy Sci.* **2003**, *68*, E1–E9. [[CrossRef](#)]
44. WHO; FAO. *Shiga Toxin-Producing Escherichia Coli (STEC) and Food: Attribution, Characterization, and Monitoring: Report*; World Health Organization: Geneva, Switzerland, 2018.
45. Bai, X.; Fu, S.; Zhang, J.; Fan, R.; Xu, Y.; Sun, H.; He, X.; Xu, J.; Xiong, Y. Identification and Pathogenomic Analysis of an *Escherichia Coli* Strain Producing a Novel Shiga Toxin 2 Subtype. *Sci. Rep.* **2018**, *8*, 6756. [[CrossRef](#)]
46. Hughes, A.C.; Zhang, Y.; Bai, X.; Xiong, Y.; Wang, Y.; Yang, X.; Xu, Q.; He, X. Structural and Functional Characterization of Stx2k, a New Subtype of Shiga Toxin 2. *Microorganisms* **2019**, *8*, 4. [[CrossRef](#)] [[PubMed](#)]
47. He, X.; Patfield, S.; Rasooly, R.; Mavrici, D. Novel Monoclonal Antibodies against Stx1d and 1e and Their Use for Improving Immunoassays. *J. Immunol. Methods* **2017**, *447*, 52–56. [[CrossRef](#)] [[PubMed](#)]
48. Koutsoumanis, K.; Allende, A.; Alvarez-Ordóñez, A.; Bover-Cid, S.; Chemaly, M.; Davies, R.; Cesare, A.D.; Herman, L.; Hilbert, F.; Lindqvist, R.; et al. Pathogenicity Assessment of Shiga Toxin-Producing *Escherichia Coli* (STEC) and the Public Health Risk Posed by Contamination of Food with STEC. *EFSA J.* **2020**, *18*, e05967. [[CrossRef](#)]
49. FAO/WHO STEC EXPERT GROUP Hazard Identification and Characterization: Criteria for Categorizing Shiga Toxin-Producing *Escherichia Coli* on a Risk Basis. *J. Food Prot.* **2019**, *82*, 7–21. [[CrossRef](#)] [[PubMed](#)]
50. Newton, H.J.; Sloan, J.; Bulach, D.M.; Seemann, T.; Allison, C.C.; Tauschek, M.; Robins-Browne, R.M.; Paton, J.C.; Whittam, T.S.; Paton, A.W.; et al. Shiga Toxin-Producing *Escherichia Coli* Strains Negative for Locus of Enterocyte Effacement. *Emerg. Infect. Dis.* **2009**, *15*, 372–380. [[CrossRef](#)]
51. Colello, R.; Krüger, A.; Velez, M.V.; Del Canto, F.; Etcheverría, A.I.; Vidal, R.; Padola, N.L. Identification and Detection of Iha Subtypes in LEE-Negative Shiga Toxin-Producing *Escherichia Coli* (STEC) Strains Isolated from Humans, Cattle and Food. *Heliyon* **2019**, *5*, e03015. [[CrossRef](#)] [[PubMed](#)]
52. Frankel, G.; Lider, O.; Hershkoviz, R.; Mould, A.P.; Kachalsky, S.G.; Candy, D.C.A.; Cahalon, L.; Humphries, M.J.; Dougan, G. The Cell-Binding Domain of Intimin from Enteropathogenic *Escherichia Coli* Binds to B1 Integrins. *J. Biol. Chem.* **1996**, *271*, 20359–20364. [[CrossRef](#)] [[PubMed](#)]
53. Sinclair, J.F.; O'Brien, A.D. Cell Surface-Localized Nucleolin Is a Eukaryotic Receptor for the Adhesin Intimin- $\gamma$  of Enterohemorrhagic *Escherichia Coli* O157:H7. *J. Biol. Chem.* **2002**, *277*, 2876–2885. [[CrossRef](#)]
54. Sinclair, J.F.; O'Brien, A.D. Intimin Types  $\alpha$ ,  $\beta$ , and  $\gamma$  Bind to Nucleolin with Equivalent Affinity but Lower Avidity than to the Translocated Intimin Receptor. *J. Biol. Chem.* **2004**, *279*, 33751–33758. [[CrossRef](#)] [[PubMed](#)]
55. Farfan, M.J.; Torres, A.G. Molecular Mechanisms That Mediate Colonization of Shiga Toxin-Producing *Escherichia Coli* Strains. *Infect. Immun.* **2012**, *80*, 903–913. [[CrossRef](#)] [[PubMed](#)]
56. Farfan, M.J.; Cantero, L.; Vidal, R.; Botkin, D.J.; Torres, A.G. Long Polar Fimbriae of Enterohemorrhagic *Escherichia Coli* O157:H7 Bind to Extracellular Matrix Proteins. *Infect. Immun.* **2011**, *79*, 3744–3750. [[CrossRef](#)]
57. Herold, S.; Paton, J.C.; Paton, A.W. Sab, a Novel Autotransporter of Locus of Enterocyte Effacement-Negative Shiga-Toxigenic *Escherichia Coli* O113:H21, Contributes to Adherence and Biofilm Formation. *Infect. Immun.* **2009**, *77*, 3234–3243. [[CrossRef](#)] [[PubMed](#)]
58. Kaper, J.B.; Nataro, J.P.; Mobley, H.L. Pathogenic *Escherichia Coli*. *Nat. Rev. Microbiol.* **2004**, *2*, 123–140. [[CrossRef](#)] [[PubMed](#)]
59. McWilliams, B.D.; Torres, A.G. EHEC Adhesins. *Microbiol. Spectr.* **2014**, *2*, EHEC-0003-2013. [[CrossRef](#)]
60. Erdem, A.L.; Avelino, F.; Xicohtencatl-Cortes, J.; Girón, J.A. Host Protein Binding and Adhesive Properties of H6 and H7 Flagella of Attaching and Effacing *Escherichia Coli*. *J. Bacteriol.* **2007**, *189*, 7426–7435. [[CrossRef](#)]
61. Lu, Y.; Iyoda, S.; Satou, H.; Satou, H.; Itoh, K.; Saitoh, T.; Watanabe, H. A New Immunoglobulin-Binding Protein, EibG, Is Responsible for the Chain-Like Adhesion Phenotype of Locus of Enterocyte Effacement-Negative, Shiga Toxin-Producing *Escherichia Coli*. *Infect. Immun.* **2006**, *74*, 5747–5755. [[CrossRef](#)]
62. Rubin, D.; Zhang, W.; Karch, H.; Kuczius, T. Distinct Expression of Immunoglobulin-Binding Proteins in Shiga Toxin-Producing *Escherichia Coli* Implicates High Protein Stability and a Characteristic Phenotype. *Toxins* **2017**, *9*, 153. [[CrossRef](#)]
63. Jaglic, Z.; Desvaux, M.; Weiss, A.; Nesse, L.L.; Meyer, R.L.; Demnerova, K.; Schmidt, H.; Giaouris, E.; Sipailiene, A.; Teixeira, P.; et al. Surface Adhesins and Exopolymers of Selected Foodborne Pathogens. *Microbiology* **2014**, *160*, 2561–2582. [[CrossRef](#)]

64. Meynier, A.; Genot, C. Molecular and Structural Organization of Lipids in Foods: Their Fate during Digestion and Impact in Nutrition. *OCL* **2017**, *24*, D202. [[CrossRef](#)]
65. Lopez, C.; Briard-Bion, V.; Ménard, O.; Beaucher, E.; Rousseau, F.; Fauquant, J.; Leconte, N.; Robert, B. Fat Globules Selected from Whole Milk According to Their Size: Different Compositions and Structure of the Biomembrane, Revealing Sphingomyelin-Rich Domains. *Food Chem.* **2011**, *125*, 355–368. [[CrossRef](#)]
66. Raynal-Ljutovac, K.; Bouvier, J.; Gayet, C.; Simon, N.; Joffre, F.; Fine, F.; Vendevre, J.-L.; Lopez, C.; Chardigny, J.-M.; Michalski, M.-C.; et al. Organisation structurale et moléculaire des lipides dans les aliments: Impacts possibles sur leur digestion et leur assimilation par l'Homme. *OCL* **2011**, *18*, 324–351. [[CrossRef](#)]
67. Evers, J.M.; Haverkamp, R.G.; Holroyd, S.E.; Jameson, G.B.; Mackenzie, D.D.S.; McCarthy, O.J. Heterogeneity of Milk Fat Globule Membrane Structure and Composition as Observed Using Fluorescence Microscopy Techniques. *Int. Dairy J.* **2008**, *18*, 1081–1089. [[CrossRef](#)]
68. Keenan, T.; Mather, I. Intracellular Origin of Milk Fat Globules and the Nature of the Milk Fat Globule Membrane. In *Advanced Dairy Chemistry Volume 2 Lipids*; Springer: Berlin/Heidelberg, Germany, 2006; pp. 137–171.
69. Lopez, C. Intracellular Origin of Milk Fat Globules, Composition and Structure of the Milk Fat Globule Membrane Highlighting the Specific Role of Sphingomyelin. In *Advanced Dairy Chemistry, Volume 2: Lipids*; McSweeney, P.L.H., Fox, P.F., O'Mahony, J.A., Eds.; Springer International Publishing: Cham, Switzerland, 2020; pp. 107–131. ISBN 978-3-030-48686-0.
70. El-Zeini, H.M. Microstructure, Rheological and Geometrical Properties of Fat Globules of Milk from Different Animal Species. *Pol. J. Food Nutr. Sci.* **2006**, *56*, 147–154.
71. Mather, I.H. A Review and Proposed Nomenclature for Major Proteins of the Milk-Fat Globule Membrane<sup>1,2</sup>. *J. Dairy Sci.* **2000**, *83*, 203–247. [[CrossRef](#)]
72. Abd El-Salam, M.H.; El-Shibiny, S. Milk Fat Globule Membrane: An Overview with Particular Emphasis on Its Nutritional and Health Benefits. *Int. J. Dairy Technol.* **2020**, *73*, 639–655. [[CrossRef](#)]
73. Jiménez-Flores, R.; Brisson, G. The Milk Fat Globule Membrane as an Ingredient: Why, How, When? *Dairy Sci. Technol.* **2008**, *88*, 5–18. [[CrossRef](#)]
74. Farrokh, C.; Jordan, K.; Auvray, F.; Glass, K.; Oppegaard, H.; Raynaud, S.; Thevenot, D.; Condron, R.; De Reu, K.; Govaris, A.; et al. Review of Shiga-Toxin-Producing *Escherichia Coli* (STEC) and Their Significance in Dairy Production. *Int. J. Food Microbiol.* **2013**, *162*, 190–212. [[CrossRef](#)]
75. Rivero, M.A.; Passucci, J.A.; Rodriguez, E.M.; Parma, A.E. Role and Clinical Course of Verotoxigenic *Escherichia Coli* Infections in Childhood Acute Diarrhoea in Argentina. *J. Med. Microbiol.* **2010**, *59*, 345–352. [[CrossRef](#)]
76. Miszczycha, S.D.; Perrin, F.; Ganet, S.; Jamet, E.; Tenenhaus-Aziza, F.; Montel, M.-C.; Thevenot-Sergentet, D. Behavior of Different Shiga Toxin-Producing *Escherichia Coli* Serotypes in Various Experimentally Contaminated Raw-Milk Cheeses. *Appl. Environ. Microbiol.* **2013**, *79*, 150–158. [[CrossRef](#)] [[PubMed](#)]
77. Miszczycha, S.D.; Bel, N.; Gay-Perret, P.; Michel, V.; Montel, M.C.; Sergentet-Thevenot, D. Short Communication: Behavior of Different Shiga Toxin-Producing *Escherichia Coli* Serotypes (O26:H11, O103:H2, O145:H28, O157:H7) during the Manufacture, Ripening, and Storage of a White Mold Cheese. *J. Dairy Sci.* **2016**, *99*, 5224–5229. [[CrossRef](#)] [[PubMed](#)]
78. Donnelly, C. *Review of Controls for Pathogen Risks in Scottish Artisan Cheeses Made from Unpasteurised Milk*; Food Standards Scotland: Aberdeen, Scotland, 2018.
79. Chon, J.-W.; Kim, J.-W.; Song, K.-Y.; Lim, J.-S.; Bae, D.; Kim, H.; Seo, K.-H. Fate and Survival of *Listeria Monocytogenes* and *Escherichia Coli* O157:H7 during Ripening of Cheddar Cheeses Manufactured from Unpasteurized Raw Milk. *LWT* **2020**, *133*, 109944. [[CrossRef](#)]
80. Gill, A.; Oudit, D. Enumeration of *Escherichia Coli* O157 in Outbreak-Associated Gouda Cheese Made with Raw Milk. *J. Food Prot.* **2015**, *78*, 1733–1737. [[CrossRef](#)]
81. Bonanno, L.; Delubac, B.; Michel, V.; Auvray, F. Influence of Stress Factors Related to Cheese-Making Process and to STEC Detection Procedure on the Induction of Stx Phages from STEC O26:H11. *Front. Microbiol.* **2017**, *8*, 296. [[CrossRef](#)]
82. Lopez, C. Focus on the Supramolecular Structure of Milk Fat in Dairy Products. *Reprod. Nutr. Dev.* **2005**, *45*, 497–511. [[CrossRef](#)]
83. Kim, H.H.; Jimenez-Flores, R. Heat-Induced Interactions between the Proteins of Milk Fat Globule Membrane and Skim Milk. *J. Dairy Sci.* **1995**, *78*, 24–35. [[CrossRef](#)]
84. Sharma, S.K.; Dalglish, D.G. Interactions between Milk Serum Proteins and Synthetic Fat Globule Membrane during Heating of Homogenized Whole Milk. *J. Agric. Food Chem.* **1993**, *41*, 1407–1412. [[CrossRef](#)]
85. Lopez, C.; Cauty, C.; Guyomarc'h, F. Organization of Lipids in Milks, Infant Milk Formulas and Various Dairy Products: Role of Technological Processes and Potential Impacts. *Dairy Sci. Technol.* **2015**, *95*, 863–893. [[CrossRef](#)]
86. Pieters, R.J. Carbohydrate Mediated Bacterial Adhesion. In *Bacterial Adhesion: Chemistry, Biology and Physics*; Linke, D., Goldman, A., Eds.; Advances in Experimental Medicine and Biology; Springer: Dordrecht, The Netherlands, 2011; pp. 227–240. ISBN 978-94-007-0940-9.
87. Keenan, T.W.; Dylewski, D.P.; Woodford, T.A.; Ford, R.H. Origin of Milk Fat Globules and the Nature of the Milk Fat Globule Membrane. In *Developments in Dairy Chemistry—2*; Springer: Dordrecht, The Netherlands, 1983; Volume 2, pp. 83–118.
88. Douëllou, T.; Galia, W.; Kerangart, S.; Marchal, T.; Milhau, N.; Bastien, R.; Bouvier, M.; Buff, S.; Montel, M.-C.; Sergentet-Thevenot, D. Milk Fat Globules Hamper Adhesion of Enterohemorrhagic *Escherichia Coli* to Enterocytes: In Vitro and In Vivo Evidence. *Front. Microbiol.* **2018**, *9*, 947. [[CrossRef](#)]

89. Brewster, J.D.; Paul, M. Short Communication: Improved Method for Centrifugal Recovery of Bacteria from Raw Milk Applied to Sensitive Real-Time Quantitative PCR Detection of *Salmonella* spp. *J. Dairy Sci.* **2016**, *99*, 3375–3379. [[CrossRef](#)] [[PubMed](#)]
90. D’Incecco, P.; Faoro, F.; Silvetti, T.; Schrader, K.; Pellegrino, L. Mechanisms of Clostridium Tyrobutyricum Removal through Natural Creaming of Milk: A Microscopy Study. *J. Dairy Sci.* **2015**, *98*, 5164–5172. [[CrossRef](#)] [[PubMed](#)]
91. Laloy, E.; Vuillemand, J.-C.; El Soda, M.; Simard, R.E. Influence of the Fat Content of Cheddar Cheese on Retention and Localization of Starters. *Int. Dairy J.* **1996**, *6*, 729–740. [[CrossRef](#)]
92. Oberg, C.J.; Wr, M.; Dj, M. Microstructure of Mozzarella Cheese during Manufacture. *Food Struct.* **1993**, *12*, 251–258.
93. Pitino, I.; Randazzo, C.L.; Cross, K.L.; Parker, M.L.; Bisignano, C.; Wickham, M.S.J.; Mandalari, G.; Caggia, C. Survival of Lactobacillus Rhamnosus Strains Inoculated in Cheese Matrix during Simulated Human Digestion. *Food Microbiol.* **2012**, *31*, 57–63. [[CrossRef](#)]
94. Brisson, G.; Payken, H.F.; Sharpe, J.P.; Jiménez-Flores, R. Characterization of Lactobacillus Reuteri Interaction with Milk Fat Globule Membrane Components in Dairy Products. *J. Agric. Food Chem.* **2010**, *58*, 5612–5619. [[CrossRef](#)]
95. Lopez, C.; Maillard, M.-B.; Briard-Bion, V.; Camier, B.; Hannon, J.A. Lipolysis during Ripening of Emmental Cheese Considering Organization of Fat and Preferential Localization of Bacteria. *J. Agric. Food Chem.* **2006**, *54*, 5855–5867. [[CrossRef](#)]
96. Sun, L.; Dicksved, J.; Priyashantha, H.; Lundh, Å.; Johansson, M. Distribution of Bacteria between Different Milk Fractions, Investigated Using Culture-Dependent Methods and Molecular-Based and Fluorescent Microscopy Approaches. *J. Appl. Microbiol.* **2019**, *127*, 1028–1037. [[CrossRef](#)]
97. Burdikova, Z.; Svindrych, Z.; Hickey, C.; Wilkinson, M.G.; Auty, M.A.E.; Samek, O.; Bernatova, S.; Krzyzanek, V.; Periasamy, A.; Sheehan, J.J. Application of Advanced Light Microscopic Techniques to Gain Deeper Insights into Cheese Matrix Physico-Chemistry. *Dairy Sci. Technol.* **2015**, *95*, 687–700. [[CrossRef](#)]
98. Hickey, C.D.; Sheehan, J.J.; Wilkinson, M.G.; Auty, M.A.E. Growth and Location of Bacterial Colonies within Dairy Foods Using Microscopy Techniques: A Review. *Front. Microbiol.* **2015**, *6*, 99. [[CrossRef](#)]
99. Klančnik, A.; Šimunović, K.; Sterniša, M.; Ramić, D.; Smole Možina, S.; Bucar, F. Anti-Adhesion Activity of Phytochemicals to Prevent Campylobacter Jejuni Biofilm Formation on Abiotic Surfaces. *Phytochem. Rev.* **2020**, *20*, 55–84. [[CrossRef](#)]
100. Asadi, A.; Razavi, S.; Talebi, M.; Gholami, M. A Review on Anti-Adhesion Therapies of Bacterial Diseases. *Infection* **2019**, *47*, 13–23. [[CrossRef](#)] [[PubMed](#)]
101. Ofek, I.; Bayer, E.A.; Abraham, S.N. Bacterial Adhesion. In *The Prokaryotes: Human Microbiology*; Rosenberg, E., DeLong, E.F., Lory, S., Stackebrandt, E., Thompson, F., Eds.; Springer: Berlin/Heidelberg, Germany, 2013; pp. 107–123. ISBN 978-3-642-30144-5.
102. Boks, N.P.; Kaper, H.J.; Norde, W.; Busscher, H.J.; van der Mei, H.C. Residence Time Dependent Desorption of Staphylococcus Epidermidis from Hydrophobic and Hydrophilic Substrata. *Colloids Surf. B Biointerfaces* **2008**, *67*, 276–278. [[CrossRef](#)] [[PubMed](#)]
103. Hermansson, M. The DLVO Theory in Microbial Adhesion. *Colloids Surf. B Biointerfaces* **1999**, *14*, 105–119. [[CrossRef](#)]
104. Bayouhdh, S.; Othmane, A.; Mora, L.; Ben Ouada, H. Assessing Bacterial Adhesion Using DLVO and XDLVO Theories and the Jet Impingement Technique. *Colloids Surf. B Biointerfaces* **2009**, *73*, 1–9. [[CrossRef](#)] [[PubMed](#)]
105. Achinas, S.; Charalampogiannis, N.; Euverink, G.J.W. A Brief Recap of Microbial Adhesion and Biofilms. *Appl. Sci.* **2019**, *9*, 2801. [[CrossRef](#)]
106. Beloin, C.; Houry, A.; Froment, M.; Ghigo, J.-M.; Henry, N. A Short-Time Scale Colloidal System Reveals Early Bacterial Adhesion Dynamics. *PLoS Biol.* **2008**, *6*, e167. [[CrossRef](#)]
107. Katsikogianni, M.; Missirlis, Y. Concise Review of Mechanisms of Bacterial Adhesion to Biomaterials and of Techniques Used in Estimating Bacteria-Material Interactions. *eCM* **2004**, *8*, 37–57. [[CrossRef](#)]
108. Dunne, W.M. Bacterial Adhesion: Seen Any Good Biofilms Lately? *Clin. Microbiol. Rev.* **2002**, *15*, 155–166. [[CrossRef](#)]
109. van Loosdrecht, M.C.; Lyklema, J.; Norde, W.; Schraa, G.; Zehnder, A.J. The Role of Bacterial Cell Wall Hydrophobicity in Adhesion. *Appl. Environ. Microbiol.* **1987**, *53*, 1893–1897. [[CrossRef](#)]
110. Zita, A.; Hermansson, M. Determination of Bacterial Cell Surface Hydrophobicity of Single Cells in Cultures and in Wastewater in Situ. *FEMS Microbiol. Lett.* **1997**, *152*, 299–306. [[CrossRef](#)]
111. Berne, C.; Ellison, C.K.; Ducret, A.; Brun, Y.V. Bacterial Adhesion at the Single-Cell Level. *Nat. Rev. Microbiol.* **2018**, *16*, 616–627. [[CrossRef](#)] [[PubMed](#)]
112. Krasowska, A.; Sigler, K. How Microorganisms Use Hydrophobicity and What Does This Mean for Human Needs? *Front. Cell Infect. Microbiol.* **2014**, *4*, 112. [[CrossRef](#)] [[PubMed](#)]
113. Law, K.-Y. Water-Surface Interactions and Definitions for Hydrophilicity, Hydrophobicity and Superhydrophobicity. *Pure Appl. Chem.* **2015**, *87*, 759–765. [[CrossRef](#)]
114. Chevalier, F.; Sommerer, N. Analytical Methods | Mass Spectrometric Methods. In *Encyclopedia of Dairy Sciences*; Elsevier: Amsterdam, The Netherlands, 2011; pp. 198–205. ISBN 978-0-12-374407-4.
115. Corredig, M.; Dalglish, D.G. Effect of Heating of Cream on the Properties of Milk Fat Globule Membrane Isolates. *J. Agric. Food Chem.* **1998**, *46*, 2533–2540. [[CrossRef](#)]
116. Hong, Y.; Brown, D.G. Electrostatic Behavior of the Charge-Regulated Bacterial Cell Surface. *Langmuir* **2008**, *24*, 5003–5009. [[CrossRef](#)] [[PubMed](#)]
117. Kłodzińska, E.; Szumski, M.; Dziubakiewicz, E.; Hryniewicz, K.; Skwarek, E.; Janusz, W.; Buszewski, B. Effect of Zeta Potential Value on Bacterial Behavior during Electrophoretic Separation. *Electrophoresis* **2010**, *31*, 1590–1596. [[CrossRef](#)]
118. Ng, W. *Zeta Potential of Escherichia Coli DH5α Grown in Different Growth Media*; PeerJ Inc.: Corte Madera, CA, USA, 2018.

119. Lytle, D.A.; Rice, E.W.; Johnson, C.H.; Fox, K.R. Electrophoretic Mobilities of *Escherichia Coli* O157:H7 and Wild-Type *Escherichia Coli* Strains. *Appl. Environ. Microbiol.* **1999**, *65*, 3222–3225. [\[CrossRef\]](#)
120. Ukuku, D.O.; Fett, W.F. Relationship of Cell Surface Charge and Hydrophobicity to Strength of Attachment of Bacteria to Cantaloupe Rind†. *J. Food Prot.* **2002**, *65*, 1093–1099. [\[CrossRef\]](#)
121. Obeid, S.; Guyomarc'h, F.; Tanguy, G.; Leconte, N.; Rousseau, F.; Dolivet, A.; Leduc, A.; Wu, X.; Cauty, C.; Jan, G.; et al. The Adhesion of Homogenized Fat Globules to Proteins Is Increased by Milk Heat Treatment and Acidic PH: Quantitative Insights Provided by AFM Force Spectroscopy. *Food Res. Int.* **2019**, *129*, 108847. [\[CrossRef\]](#)
122. Michalski, M.-C.; Michel, F.; Sainmont, D.; Briard, V. Apparent  $\zeta$ -Potential as a Tool to Assess Mechanical Damages to the Milk Fat Globule Membrane. *Colloids Surf. B Biointerfaces* **2002**, *23*, 23–30. [\[CrossRef\]](#)
123. Michalski, M.-C.; Camier, B.; Briard, V.; Leconte, N.; Gassi, J.-Y.; Goudédranche, H.; Michel, F.; Fauquant, J. The Size of Native Milk Fat Globules Affects Physico-Chemical and Functional Properties of Emmental Cheese. *Le Lait* **2004**, *84*, 343–358. [\[CrossRef\]](#)
124. Verma, A.; Ghosh, T.; Bhushan, B.; Packirisamy, G.; Navani, N.K.; Sarangi, P.P.; Ambatipudi, K. Characterization of Difference in Structure and Function of Fresh and Mastitic Bovine Milk Fat Globules. *PLoS ONE* **2019**, *14*, e0221830. [\[CrossRef\]](#)
125. Malik, P.; Danthine, S.; Paul, A.; Blecker, C. Physical-Chemical Properties of Milk Fat Globule Membrane at Different Stages of Isolation. *Sci. Bull. Ser. F Biotechnol.* **2015**, *19*, 154–159.
126. Azghani, A.O.; Clark, C.A. Bacterial Infection Process: An Overview. In *Regulation of the Inflammatory Response in Health and Disease*; Research Signpost: Thiruvananthapuram, India, 2009; pp. 37–55. ISBN 978-81-308-0372-2.
127. Kendall, K.; Roberts, A.D. Van Der Waals Forces Influencing Adhesion of Cells. *Philos. Trans. R. Soc. B Biol. Sci.* **2015**, *370*, 20140078. [\[CrossRef\]](#)
128. Burgain, J.; Scher, J.; Francius, G.; Borges, F.; Corgneau, M.; Revol-Junelles, A.M.; Cailliez-Grimal, C.; Gaiani, C. Lactic Acid Bacteria in Dairy Food: Surface Characterization and Interactions with Food Matrix Components. *Adv. Colloid Interface Sci.* **2014**, *213*, 21–35. [\[CrossRef\]](#)
129. Kiely, L.J.; Olson, N.F. The Physicochemical Surface Characteristics of Lactobacillus Casei. *Food Microbiol.* **2000**, *17*, 277–291. [\[CrossRef\]](#)
130. Kiely, L.J.; Olson, N.F. Short Communication: Estimate of Non Electrostatic Interaction Free Energy Parameters for Milk Fat Globules. *J. Dairy Sci.* **2003**, *86*, 3110–3112. [\[CrossRef\]](#)
131. Shoaf-Sweeney, K.D.; Hutkins, R.W. Chapter 2 Adherence, Anti-Adherence, and Oligosaccharides. In *Advances in Food and Nutrition Research*; Elsevier: Amsterdam, The Netherlands, 2008; Volume 55, pp. 101–161. ISBN 978-0-12-374120-2.
132. Cho, S.-H.; Lee, K.M.; Kim, C.-H.; Kim, S.S. Construction of a Lectin–Glycan Interaction Network from Enterohemorrhagic *Escherichia Coli* Strains by Multi-Omics Analysis. *IJMS* **2020**, *21*, 2681. [\[CrossRef\]](#)
133. Ielasi, F.S.; Alioscha-Perez, M.; Donohue, D.; Claes, S.; Sahli, H.; Schols, D.; Willaert, R.G. Lectin–Glycan Interaction Network-Based Identification of Host Receptors of Microbial Pathogenic Adhesins. *mBio* **2016**, *7*, e00584-16. [\[CrossRef\]](#)
134. Sharon, N.; Ofek, I. Microbial Lectins. In *Comprehensive Glycoscience-From Chemistry to Systems Biology*; Elsevier: Amsterdam, The Netherlands, 2007; pp. 623–659.
135. Nie, S.; Cui, S.W.; Xie, M. *Bioactive Polysaccharides*; Academic Press: London, UK; Elsevier: San Diego, CA, USA, 2018; ISBN 978-0-12-809418-1.
136. Chevalier, L.; Selim, J.; Genty, D.; Baste, J.M.; Piton, N.; Boukhalfa, I.; Hamzaoui, M.; Pareige, P.; Richard, V. Electron Microscopy Approach for the Visualization of the Epithelial and Endothelial Glycocalyx. *Morphologie* **2017**, *101*, 55–63. [\[CrossRef\]](#)
137. Varki, A. Biological Roles of Glycans. *Glycobiology* **2017**, *27*, 3–49. [\[CrossRef\]](#)
138. Monteiro, R.; Ageorges, V.; Rojas-Lopez, M.; Schmidt, H.; Weiss, A.; Bertin, Y.; Forano, E.; Jubelin, G.; Henderson, I.R.; Livrelli, V.; et al. A Secretome View of Colonisation Factors in Shiga Toxin-Encoding *Escherichia Coli* (STEC): From Enterohaemorrhagic *E. Coli* (EHEC) to Related Enteropathotypes. *FEMS Microbiol. Lett.* **2016**, *363*, fnw179. [\[CrossRef\]](#)
139. Dhakal, B.K.; Bower, J.M.; Mulvey, M.A.; Yang, X.H. Pili, Fimbriae. In *Encyclopedia of Microbiology*, 4th ed.; Schmidt, T.M., Ed.; Academic Press: Oxford, UK, 2019; pp. 595–613. ISBN 978-0-12-811737-8.
140. Ross, S.A.; Lane, J.A.; Kilcoyne, M.; Joshi, L.; Hickey, R.M. Defatted Bovine Milk Fat Globule Membrane Inhibits Association of Enterohaemorrhagic *Escherichia Coli* O157:H7 with Human HT-29 Cells. *Int. Dairy J.* **2016**, *59*, 36–43. [\[CrossRef\]](#)
141. Sánchez-Juanes, F.; Alonso, J.M.; Zancada, L.; Hueso, P. Glycosphingolipids from Bovine Milk and Milk Fat Globule Membranes: A Comparative Study. Adhesion to Enterotoxigenic *Escherichia Coli* Strains. *Biol. Chem.* **2009**, *390*, 31–40. [\[CrossRef\]](#)
142. Novakovic, P.; Huang, Y.Y.; Lockerbie, B.; Shahriar, F.; Kelly, J.; Gordon, J.R.; Middleton, D.M.; Loewen, M.E.; Kidney, B.A.; Simko, E. Identification of *Escherichia Coli* F4ac-Binding Proteins in Porcine Milk Fat Globule Membrane. *Can. J. Vet. Res.* **2015**, *79*, 120–128.
143. Bergström, J.H.; Birchenough, G.M.H.; Katona, G.; Schroeder, B.O.; Schütte, A.; Ermund, A.; Johansson, M.E.V.; Hansson, G.C. Gram-Positive Bacteria Are Held at a Distance in the Colon Mucus by the Lectin-like Protein ZG16. *Proc. Natl. Acad. Sci. USA* **2016**, *113*, 13833–13838. [\[CrossRef\]](#)
144. Barboza, M.; Pinzon, J.; Wickramasinghe, S.; Froehlich, J.W.; Moeller, I.; Smilowitz, J.T.; Ruhaak, L.R.; Huang, J.; Lönnerdal, B.; German, J.B.; et al. Glycosylation of Human Milk Lactoferrin Exhibits Dynamic Changes During Early Lactation Enhancing Its Role in Pathogenic Bacteria-Host Interactions. *Mol. Cell Proteom.* **2012**, *11*, M111.015248. [\[CrossRef\]](#)
145. Ye, A.; Singh, H.; Taylor, M.; Anema, S. Interactions of Whey Proteins with Milk Fat Globule Membrane Proteins during Heat Treatment of Whole Milk. *Le Lait* **2004**, *84*, 269–283. [\[CrossRef\]](#)

146. Tailford, L.E.; Crost, E.H.; Kavanaugh, D.; Juge, N. Mucin Glycan Foraging in the Human Gut Microbiome. *Front. Genet.* **2015**, *6*, 81. [[CrossRef](#)]
147. Josenhans, C.; Müthing, J.; Elling, L.; Bartfeld, S.; Schmidt, H. How Bacterial Pathogens of the Gastrointestinal Tract Use the Mucosal Glyco-Code to Harness Mucus and Microbiota: New Ways to Study an Ancient Bag of Tricks. *Int. J. Med. Microbiol.* **2020**, *310*, 151392. [[CrossRef](#)]
148. Harvey, K.L.; Jarocki, V.M.; Charles, I.G.; Djordjevic, S.P. The Diverse Functional Roles of Elongation Factor Tu (EF-Tu) in Microbial Pathogenesis. *Front. Microbiol.* **2019**, *10*, 2351. [[CrossRef](#)]
149. Bao, J.; Pan, G.; Poncz, M.; Wei, J.; Ran, M.; Zhou, Z. Serpin Functions in Host-Pathogen Interactions. *PeerJ* **2018**, *6*, e4557. [[CrossRef](#)]
150. He, X.; Zhang, W.; Chang, Q.; Su, Z.; Gong, D.; Zhou, Y.; Xiao, J.; Drelich, A.; Liu, Y.; Popov, V.; et al. A New Role for Host Annexin A2 in Establishing Bacterial Adhesion to Vascular Endothelial Cells: Lines of Evidence from Atomic Force Microscopy and an in Vivo Study. *Lab. Invest.* **2019**, *99*, 1650–1660. [[CrossRef](#)]
151. Li, X.; Pei, G.; Zhang, L.; Cao, Y.; Wang, J.; Yu, L.; Dianjun, W.; Gao, S.; Zhang, Z.-S.; Yao, Z.; et al. Compounds Targeting YadC of Uropathogenic *Escherichia Coli* and Its Host Receptor Annexin A2 Decrease Bacterial Colonization in Bladder. *EBioMedicine* **2019**, *50*, 23–33. [[CrossRef](#)]
152. Rand, J.H.; Wu, X.-X.; Lin, E.Y.; Griffel, A.; Gialanella, P.; McKittrick, J.C. Annexin A5 Binds to Lipopolysaccharide and Reduces Its Endotoxin Activity. *mBio* **2012**, *3*, e00292-11. [[CrossRef](#)]
153. Hari-Dass, R.; Shah, C.; Meyer, D.J.; Raynes, J.G. Serum Amyloid A Protein Binds to Outer Membrane Protein A of Gram-Negative Bacteria. *J. Biol. Chem.* **2005**, *280*, 18562–18567. [[CrossRef](#)]
154. Beck, W.H.J.; Adams, C.P.; Biglang-awa, I.M.; Patel, A.B.; Vincent, H.; Haas-Stapleton, E.J.; Weers, P.M.M. Apolipoprotein A-I Binding to Anionic Vesicles and Lipopolysaccharides: Role for Lysine Residues in Antimicrobial Properties. *Biochim. Biophys. Acta* **2013**, *1828*, 1503–1510. [[CrossRef](#)]
155. Han, Q.; Han, Y.; Wen, H.; Pang, Y.; Li, Q. Molecular Evolution of Apolipoprotein Multigene Family and the Original Functional Properties of Serum Apolipoprotein (LAL2) in *Lampetra Japonica*. *Front. Immunol.* **2020**, *11*, 1751. [[CrossRef](#)]
156. Huang, Y.; Hui, K.; Jin, M.; Yin, S.; Wang, W.; Ren, Q. Two Endoplasmic Reticulum Proteins (Calnexin and Calreticulin) Are Involved in Innate Immunity in Chinese Mitten Crab (*Eriocheir Sinensis*). *Sci. Rep.* **2016**, *6*, 27578. [[CrossRef](#)]
157. van Harten, R.M.; van Woudenberg, E.; van Dijk, A.; Haagsman, H.P. Cathelicidins: Immunomodulatory Antimicrobials. *Vaccines* **2018**, *6*, 63. [[CrossRef](#)]
158. Baranova, I.N.; Kurlander, R.; Bocharov, A.V.; Vishnyakova, T.G.; Chen, Z.; Remaley, A.T.; Csako, G.; Patterson, A.P.; Eggerman, T.L. Role of Human CD36 in Bacterial Recognition, Phagocytosis and Pathogen-Induced C-Jun N-Terminal Kinase (JNK)-Mediated Signaling. *J. Immunol.* **2008**, *181*, 7147–7156. [[CrossRef](#)] [[PubMed](#)]
159. Martinez, V.G.; Escoda-Ferran, C.; Tadeu Simões, I.; Arai, S.; Orta Mascaró, M.; Carreras, E.; Martínez-Florensa, M.; Yelamos, J.; Miyazaki, T.; Lozano, F. The Macrophage Soluble Receptor AIM/Ap16/CD5L Displays a Broad Pathogen Recognition Spectrum and Is Involved in Early Response to Microbial Aggression. *Cell Mol. Immunol.* **2014**, *11*, 343–354. [[CrossRef](#)] [[PubMed](#)]
160. Collins, J.; van Pijkeren, J.-P.; Svensson, L.; Claesson, M.J.; Sturme, M.; Li, Y.; Cooney, J.C.; van Sinderen, D.; Walker, A.W.; Parkhill, J.; et al. Fibrinogen-Binding and Platelet-Aggregation Activities of a *Lactobacillus Salivarius* Septicaemia Isolate Are Mediated by a Novel Fibrinogen-Binding Protein. *Mol. Microbiol.* **2012**, *85*, 862–877. [[CrossRef](#)] [[PubMed](#)]
161. Foster, T.J. The MSCRAMM Family of Cell-Wall-Anchored Surface Proteins of Gram-Positive Cocci. *Trends Microbiol.* **2019**, *27*, 927–941. [[CrossRef](#)] [[PubMed](#)]
162. Hymes, J.P.; Klaenhammer, T.R. Stuck in the Middle: Fibronectin-Binding Proteins in Gram-Positive Bacteria. *Front. Microbiol.* **2016**, *7*, 1504. [[CrossRef](#)] [[PubMed](#)]
163. Ko, Y.-P.; Flick, M.J. Fibrinogen Is at the Interface of Host Defense and Pathogen Virulence in *Staphylococcus Aureus* Infection. *Semin. Thromb Hemost* **2016**, *42*, 408–421. [[CrossRef](#)]
164. Oh, Y.J.; Hubauer-Brenner, M.; Gruber, H.J.; Cui, Y.; Traxler, L.; Siligan, C.; Park, S.; Hinterdorfer, P. Curli Mediate Bacterial Adhesion to Fibronectin via Tensile Multiple Bonds. *Sci. Rep.* **2016**, *6*, 33909. [[CrossRef](#)] [[PubMed](#)]
165. Pizarro-Cerdá, J.; Cossart, P. Bacterial Adhesion and Entry into Host Cells. *Cell* **2006**, *124*, 715–727. [[CrossRef](#)] [[PubMed](#)]
166. Vasta, G.R. Roles of Galectins in Infection. *Nat. Rev. Microbiol.* **2009**, *7*, 424–438. [[CrossRef](#)]
167. Bucki, R.; Byfield, F.J.; Kulakowska, A.; McCormick, M.E.; Drozdowski, W.; Namiot, Z.; Hartung, T.; Janmey, P.A. Extracellular Gelsolin Binds Lipoteichoic Acid and Modulates Cellular Response to Proinflammatory Bacterial Wall Components. *J. Immunol.* **2008**, *181*, 4936–4944. [[CrossRef](#)]
168. Hoffmann, C.; Ohlsen, K.; Hauck, C.R. Integrin-Mediated Uptake of Fibronectin-Binding Bacteria. *Eur. J. Cell Biol.* **2011**, *90*, 891–896. [[CrossRef](#)] [[PubMed](#)]
169. Krukoni, E.S.; Isberg, R.R. Microbial Pathogens and Integrin Interactions. In *Integrin-Ligand Interaction*; Springer: Boston, MA, USA, 1997; pp. 175–197. ISBN 978-1-4757-4066-0.
170. Scibelli, A.; Roperto, S.; Manna, L.; Pavone, L.M.; Tafuri, S.; Morte, R.D.; Staiano, N. Engagement of Integrins as a Cellular Route of Invasion by Bacterial Pathogens. *Vet. J.* **2007**, *173*, 482–491. [[CrossRef](#)] [[PubMed](#)]
171. Ulanova, M.; Gravelle, S.; Barnes, R. The Role of Epithelial Integrin Receptors in Recognition of Pulmonary Pathogens. *J. Innate Immun.* **2008**, *1*, 4–17. [[CrossRef](#)] [[PubMed](#)]

172. Shahriar, F.; Ngeleka, M.; Gordon, J.R.; Simko, E. Identification by Mass Spectroscopy of F4ac-Fimbrial-Binding Proteins in Porcine Milk and Characterization of Lactadherin as an Inhibitor of F4ac-Positive *Escherichia Coli* Attachment to Intestinal Villi in Vitro. *Dev. Comp. Immunol.* **2006**, *30*, 723–734. [[CrossRef](#)] [[PubMed](#)]
173. Vazquez-Juarez, R.C.; Romero, M.J.; Ascencio, F. Adhesive Properties of a LamB-like Outer-Membrane Protein and Its Contribution to *Aeromonas Veronii* Adhesion. *J. Appl. Microbiol.* **2004**, *96*, 700–708. [[CrossRef](#)]
174. Peiser, L.; Gough, P.J.; Kodama, T.; Gordon, S. Macrophage Class A Scavenger Receptor-Mediated Phagocytosis of *Escherichia Coli*: Role of Cell Heterogeneity, Microbial Strain, and Culture Conditions In Vitro. *Infect. Immun.* **2000**, *68*, 1953–1963. [[CrossRef](#)]
175. Naughton, J.; Duggan, G.; Bourke, B.; Clyne, M. Interaction of Microbes with Mucus and Mucins. *Gut Microbes* **2014**, *5*, 48–52. [[CrossRef](#)]
176. Iovino, F.; Engelen-Lee, J.-Y.; Brouwer, M.; van de Beek, D.; van der Ende, A.; Valls Seron, M.; Mellroth, P.; Muschiol, S.; Bergstrand, J.; Widengren, J.; et al. PIgR and PECAM-1 Bind to Pneumococcal Adhesins RrgA and PspC Mediating Bacterial Brain Invasion. *J. Exp. Med.* **2017**, *214*, 1619–1630. [[CrossRef](#)]
177. Johansen, F.-E.; Kaetzel, C.S. Regulation of the Polymeric Immunoglobulin Receptor and IgA Transport: New Advances in Environmental Factors That Stimulate PIgR Expression and Its Role in Mucosal Immunity. *Mucosal Immunol.* **2011**, *4*, 598–602. [[CrossRef](#)]
178. Lee, B.; Bowden, G.H.W.; Myal, Y. Identification of Mouse Submaxillary Gland Protein in Mouse Saliva and Its Binding to Mouse Oral Bacteria. *Arch. Oral Biol.* **2002**, *47*, 327–332. [[CrossRef](#)]
179. Schenkels, L.C.P.M.; Walgreen-Weterings, E.; Oomen, L.C.J.M.; Bolscher, J.G.M.; Veerman, E.C.I.; Nieuw Amerongen, A.V. In Vivo Binding of the Salivary Glycoprotein EP-GP (Identical to GCDPF-15) to Oral and Non-Oral Bacteria Detection and Identification of EP-GP Binding Species. *Biol. Chem.* **1997**, *378*, 83–88. [[CrossRef](#)]
180. Lu, X.; Wang, M.; Qi, J.; Wang, H.; Li, X.; Gupta, D.; Dziarski, R. Peptidoglycan Recognition Proteins Are a New Class of Human Bactericidal Proteins. *J. Biol. Chem.* **2006**, *281*, 5895–5907. [[CrossRef](#)]
181. Green, R.S.; Naimi, W.A.; Oliver, L.D.; O’Bier, N.; Cho, J.; Conrad, D.H.; Martin, R.K.; Marconi, R.T.; Carlyon, J.A. Binding of Host Cell Surface Protein Disulfide Isomerase by *Anaplasma Phagocytophilum* Asp14 Enables Pathogen Infection. *mBio* **2020**, *11*, e03141-19. [[CrossRef](#)] [[PubMed](#)]
182. Kawasaki, T.; Kawai, T. Toll-Like Receptor Signaling Pathways. *Front. Immunol.* **2014**, *5*, 461. [[CrossRef](#)] [[PubMed](#)]
183. Mossman, K.L.; Mian, M.F.; Lauzon, N.M.; Gyles, C.L.; Lichty, B.; Mackenzie, R.; Gill, N.; Ashkar, A.A. Cutting Edge: FimH Adhesin of Type 1 Fimbriae Is a Novel TLR4 Ligand. *J. Immunol.* **2008**, *181*, 6702–6706. [[CrossRef](#)]
184. Oliveira-Nascimento, L.; Massari, P.; Wetzler, L.M. The Role of TLR2 in Infection and Immunity. *Front. Immunol.* **2012**, *3*, 79. [[CrossRef](#)]
185. Tükel, Ç.; Nishimori, J.H.; Wilson, R.P.; Winter, M.G.; Keestra, A.M.; van Putten, J.P.M.; Bäumlner, A.J. Toll-like Receptors 1 and 2 Cooperatively Mediate Immune Responses to Curli, a Common Amyloid from Enterobacterial Biofilms. *Cell Microbiol.* **2010**, *12*, 1495–1505. [[CrossRef](#)]
186. Pak, J.; Pu, Y.; Zhang, Z.T.; Hasty, D.L.; Wu, X.R. Tamm-Horsfall Protein Binds to Type 1 Fimbriated *Escherichia Coli* and Prevents *E. Coli* from Binding to Uroplakin Ia and Ib Receptors. *J. Biol. Chem.* **2001**, *276*, 9924–9930. [[CrossRef](#)]
187. Yanagihara, S.; Kanaya, T.; Fukuda, S.; Nakato, G.; Hanazato, M.; Wu, X.-R.; Yamamoto, N.; Ohno, H. Uromodulin-SlpA Binding Dictates *Lactobacillus Acidophilus* Uptake by Intestinal Epithelial M Cells. *Int. Immunol.* **2017**, *29*, 357–363. [[CrossRef](#)] [[PubMed](#)]
188. Mak, T.N.; Brüggemann, H. Vimentin in Bacterial Infections. *Cells* **2016**, *5*, 18. [[CrossRef](#)]
189. Singh, B.; Su, Y.-C.; Riesbeck, K. Vitronectin in Bacterial Pathogenesis: A Host Protein Used in Complement Escape and Cellular Invasion. *Mol. Microbiol.* **2010**, *78*, 545–560. [[CrossRef](#)]
190. Baik, J.E.; Choe, H.-I.; Hong, S.W.; Kang, S.-S.; Ahn, K.B.; Cho, K.; Yun, C.-H.; Han, S.H. Human Salivary Proteins with Affinity to Lipoteichoic Acid of *Enterococcus Faecalis*. *Mol. Immunol.* **2016**, *77*, 52–59. [[CrossRef](#)]
191. Gomand, F.; Borges, F.; Guerin, J.; El-Kirat-Chatel, S.; Francius, G.; Dumas, D.; Burgain, J.; Gaiani, C. Adhesive Interactions Between Lactic Acid Bacteria and  $\beta$ -Lactoglobulin: Specificity and Impact on Bacterial Location in Whey Protein Isolate. *Front. Microbiol.* **2019**, *10*, 1512. [[CrossRef](#)]
192. Guerin, J.; Bacharouche, J.; Burgain, J.; Lebeer, S.; Francius, G.; Borges, F.; Scher, J.; Gaiani, C. Pili of *Lactobacillus Rhamnosus* GG Mediate Interaction with  $\beta$ -Lactoglobulin. *Food Hydrocoll.* **2016**, *58*, 35–41. [[CrossRef](#)]
193. Mather, I.H. Milk Lipids | Milk Fat Globule Membrane. In *Encyclopedia of Dairy Sciences*; Elsevier: Amsterdam, The Netherlands, 2011; pp. 680–690. ISBN 978-0-12-374407-4.
194. Yang, M.; Cong, M.; Peng, X.; Wu, J.; Wu, R.; Liu, B.; Ye, W.; Yue, X. Quantitative Proteomic Analysis of Milk Fat Globule Membrane (MFGM) Proteins in Human and Bovine Colostrum and Mature Milk Samples through ITRAQ Labeling. *Food Funct.* **2016**, *7*, 2438–2450. [[CrossRef](#)]
195. Bachiero, D.; Uson, S.; Jim n, R. Lipid Binding Characterization of Lactic Acid Bacteria in Dairy Products. *J. Dairy Sci.* **2007**, *90* (Suppl. S1), 490.
196. Zhang, L.; Garc a-Cano, I.; Jim nez-Flores, R. Characterization of Adhesion between *Limosilactobacillus Reuteri* and Milk Phospholipids by Density Gradient and Gene Expression. *JDS Commun.* **2020**, *1*, 29–35. [[CrossRef](#)]
197. Janganan, T.K.; Mullin, N.; Tzokov, S.B.; Stringer, S.; Fagan, R.P.; Hobbs, J.K.; Moir, A.; Bullough, P.A. Characterization of the Spore Surface and Exosporium Proteins of *Clostridium Sporogenes*; Implications for *Clostridium Botulinum* Group I Strains. *Food Microbiol.* **2016**, *59*, 205–212. [[CrossRef](#)]

198. Shuster, B.; Khemmani, M.; Nakaya, Y.; Holland, G.; Iwamoto, K.; Abe, K.; Imamura, D.; Maryn, N.; Driks, A.; Sato, T.; et al. Expansion of the Spore Surface Polysaccharide Layer in *Bacillus Subtilis* by Deletion of Genes Encoding Glycosyltransferases and Glucose Modification Enzymes. *J. Bacteriol.* **2019**, *201*, e00321-19. [[CrossRef](#)]
199. D’Incecco, P.; Ong, L.; Pellegrino, L.; Faoro, F.; Barbiroli, A.; Gras, S. Effect of Temperature on the Microstructure of Fat Globules and the Immunoglobulin-Mediated Interactions between Fat and Bacteria in Natural Raw Milk Creaming. *J. Dairy Sci.* **2018**, *101*, 2984–2997. [[CrossRef](#)]
200. LeBouder, E.; Rey-Nores, J.E.; Raby, A.-C.; Affolter, M.; Vidal, K.; Thornton, C.A.; Labéta, M.O. Modulation of Neonatal Microbial Recognition: TLR-Mediated Innate Immune Responses Are Specifically and Differentially Modulated by Human Milk. *J. Immunol.* **2006**, *176*, 3742–3752. [[CrossRef](#)]
201. Honkanen-Buzalski, T.; Sandholm, M. Association of Bovine Secretory Immunoglobulins with Milk Fat Globule Membranes. *Comp. Immunol. Microbiol. Infect. Dis.* **1981**, *4*, 329–342. [[CrossRef](#)]
202. Schrotten, H.; Bosch, M.; Nobis-Bosch, R.; Köhler, H.; Hanisch, F.G.; Plogmann, R. Secretory Immunoglobulin A Is a Component of the Human Milk Fat Globule Membrane. *Pediatr. Res.* **1999**, *45*, 82–86. [[CrossRef](#)]
203. Korhonen, H.; Marnila, P.; Gill, H.S. Bovine Milk Antibodies for Health. *Br. J. Nutr.* **2000**, *84*, 135–146. [[CrossRef](#)]
204. Mitra, A.K.; Mahalanabis, D.; Ashraf, H.; Unicomb, L.; Eeckels, R.; Tzipori, S. Hyperimmune Cow Colostrum Reduces Diarrhoea Due to Rotavirus: A Double-Blind, Controlled Clinical Trial. *Acta Paediatr.* **1995**, *84*, 996–1001. [[CrossRef](#)]
205. Tawfeek, H.I.; Najim, N.H.; Al-Mashikhi, S. Efficacy of an Infant Formula Containing Anti-*Escherichia Coli* Colostral Antibodies from Hyperimmunized Cows in Preventing Diarrhea in Infants and Children: A Field Trial. *Int. J. Infect. Dis.* **2003**, *7*, 120–128. [[CrossRef](#)]
206. Adachi, E.; Tanaka, H.; Toyoda, N.; Takeda, T. Detection of bactericidal antibody in the breast milk of a mother infected with enterohemorrhagic *Escherichia Coli* O157:H7. *Kansenshogaku Zasshi* **1999**, *73*, 451–456. [[CrossRef](#)]
207. Noguera-Obenza, M.; Ochoa, T.J.; Gomez, H.F.; Guerrero, M.L.; Herrera-Insua, I.; Morrow, A.L.; Ruiz-Palacios, G.; Pickering, L.K.; Guzman, C.A.; Cleary, T.G. Human Milk Secretory Antibodies against Attaching and Effacing *Escherichia Coli* Antigens. *Emerg. Infect. Dis.* **2003**, *9*, 545–551. [[CrossRef](#)]
208. Funatogawa, K.; Ide, T.; Kirikae, F.; Saruta, K.; Nakano, M.; Kirikae, T. Use of Immunoglobulin Enriched Bovine Colostrum against Oral Challenge with Enterohaemorrhagic *Escherichia Coli* O157:H7 in Mice. *Microbiol. Immunol.* **2002**, *46*, 761–766. [[CrossRef](#)]
209. Funatogawa, K.; Tada, T.; Kuwahara-Arai, K.; Kirikae, T.; Takahashi, M. Enriched Bovine IgG Fraction Prevents Infections with Enterohaemorrhagic *Escherichia Coli* O157:H7, Salmonella Enterica Serovar Enteritidis, and Mycobacterium Avium. *Food Sci. Nutr.* **2019**, *7*, 2726–2730. [[CrossRef](#)]
210. Rabinovitz, B.C.; Gerhardt, E.; Tironi Farinati, C.; Abdala, A.; Galarza, R.; Vilde, D.A.; Ibarra, C.; Cataldi, A.; Mercado, E.C. Vaccination of Pregnant Cows with EspA, EspB,  $\gamma$ -Intimin, and Shiga Toxin 2 Proteins from *Escherichia Coli* O157:H7 Induces High Levels of Specific Colostral Antibodies That Are Transferred to Newborn Calves. *J. Dairy Sci.* **2012**, *95*, 3318–3326. [[CrossRef](#)]
211. de Oliveira, I.R.; Bessler, H.C.; Bao, S.N.; del Lima, R.; Giugliano, L.G. Inhibition of Enterotoxigenic *Escherichia Coli* (ETEC) Adhesion to Caco-2 Cells by Human Milk and Its Immunoglobulin and Non-Immunoglobulin Fractions. *Braz. J. Microbiol.* **2007**, *38*, 86–92. [[CrossRef](#)]
212. Atroshi, F.; Alaviuhkola, T.; Schildt, R.; Sandholm, M. Fat Globule Membrane of Sow Milk as a Target for Adhesion of K88-Positive *Escherichia Coli*. *Comp. Immunol. Microbiol. Infect. Dis.* **1983**, *6*, 235–245. [[CrossRef](#)]
213. Mulder, H.; Walstra, P. *The Milk Fat Globule*; Commonwealth Agricultural Bureaux Farnham Royal: Slough, UK, 1974; ISBN 0-85198-289-1.
214. Geer, S.R.; Barbano, D.M. The Effect of Immunoglobulins and Somatic Cells on the Gravity Separation of Fat, Bacteria, and Spores in Pasteurized Whole Milk. *J. Dairy Sci.* **2014**, *97*, 2027–2038. [[CrossRef](#)]
215. Hansen, S.F.; Larsen, L.B.; Wiking, L. Thermal Effects on IgM-Milk Fat Globule-Mediated Agglutination. *J. Dairy Res.* **2019**, *86*, 108–113. [[CrossRef](#)]
216. Turula, H.; Wobus, C.E. The Role of the Polymeric Immunoglobulin Receptor and Secretory Immunoglobulins during Mucosal Infection and Immunity. *Viruses* **2018**, *10*, 237. [[CrossRef](#)]
217. Zhang, W.; Xu, L.; Park, H.-B.; Hwang, J.; Kwak, M.; Lee, P.C.W.; Liang, G.; Zhang, X.; Xu, J.; Jin, J.-O. *Escherichia Coli* Adhesion Portion FimH Functions as an Adjuvant for Cancer Immunotherapy. *Nat. Commun.* **2020**, *11*, 1187. [[CrossRef](#)]
218. Rapsinski, G.J.; Newman, T.N.; Oppong, G.O.; van Putten, J.P.M.; Tükel, Ç. CD14 Protein Acts as an Adaptor Molecule for the Immune Recognition of Salmonella Curli Fibers. *J. Biol. Chem.* **2013**, *288*, 14178–14188. [[CrossRef](#)]
219. Lenehan, D.; Murray, A.; Smith, S.; Uhlin, B.E.; Mitchell, J. Characterisation of *E. Coli* Lipopolysaccharide Adherence to Platelet Receptors. *Blood* **2016**, *128*, 4906. [[CrossRef](#)]
220. Li, B.; Liu, H.; Wang, W. Multiplex Real-Time PCR Assay for Detection of *Escherichia Coli* O157:H7 and Screening for Non-O157 Shiga Toxin-Producing *E. Coli*. *BMC Microbiol.* **2017**, *17*, 215. [[CrossRef](#)] [[PubMed](#)]
221. Miszczycha, S.D.; Ganet, S.; Duniere, L.; Rozand, C.; Loukiadis, E.; Thevenot-Sergentet, D. Novel Real-Time PCR Method to Detect *Escherichia Coli* O157:H7 in Raw Milk Cheese and Raw Ground Meat. *J. Food Prot.* **2012**, *75*, 1373–1381. [[CrossRef](#)] [[PubMed](#)]
222. Martens, E.C.; Neumann, M.; Desai, M.S. Interactions of Commensal and Pathogenic Microorganisms with the Intestinal Mucosal Barrier. *Nat. Rev. Microbiol.* **2018**, *16*, 457. [[CrossRef](#)]
223. Stinson, L.F.; Ma, J.; Rea, A.; Dymock, M.; Geddes, D.T. Centrifugation Does Not Remove Bacteria from the Fat Fraction of Human Milk. *Sci. Rep.* **2021**, *11*, 572. [[CrossRef](#)] [[PubMed](#)]



224. Park, J.Y.; Lim, M.-C.; Park, K.; Ok, G.; Chang, H.-J.; Lee, N.; Park, T.J.; Choi, S.-W. Detection of *E. Coli* O157:H7 in Food Using Automated Immunomagnetic Separation Combined with Real-Time PCR. *Processes* **2020**, *8*, 908. [[CrossRef](#)]
225. Yang, D.; Wang, Y.; Zhao, L.; Rao, L.; Liao, X. Extracellular PH Decline Introduced by High Pressure Carbon Dioxide Is a Main Factor Inducing Bacteria to Enter Viable but Non-Culturable State. *Food Res. Int.* **2022**, *151*, 110895. [[CrossRef](#)]
226. Quigley, L.; O'Sullivan, O.; Beresford, T.P.; Ross, R.P.; Fitzgerald, G.F.; Cotter, P.D. A Comparison of Methods Used to Extract Bacterial DNA from Raw Milk and Raw Milk Cheese. *J. Appl. Microbiol.* **2012**, *113*, 96–105. [[CrossRef](#)]
227. Giffel, M.T.; Horst, H.V.D. Comparison between Bactofugation and Microfiltration Regarding Efficiency of Somatic Cell and Bacteria Removal. *Bull. Int. Dairy Fed.* **2004**, *389*, 49–53.
228. Bagel, A.; Université de Lyon, Lyon, France; Douëllou, T.; Université de Lyon, Lyon, France; Sergentet, D.; Université de Lyon, Lyon, France. Distribution of *Escherichia coli* in bovine raw milk by creaming assay. Unpublished work. 2019.
229. Anderson, J.F. The Relative Proportion Of Bacteria In Top Milk (Cream Layer) And Bottom Milk (Skim Milk), and Its Bearing On Infant Feeding. *J. Infect. Dis.* **1909**, *6*, 392–400. [[CrossRef](#)]
230. Bird, J. Cream Separation. *Int. J. Dairy Technol.* **1991**, *44*, 61–63. [[CrossRef](#)]
231. Kahane, I.; Ofek, I. *Toward Anti-Adhesion Therapy for Microbial Diseases*; Springer Science & Business Media: Berlin/Heidelberg, Germany, 2012; ISBN 978-1-4613-0415-9.
232. Orth, K.; Krachler, A.-M. Made to Stick: Anti-Adhesion Therapy for Bacterial Infections: A Major Advantage in Targeting Adhesion Is That the Body Clears Invading Pathogens Instead of Killing Them. *Microbe Mag.* **2013**, *8*, 286–290. [[CrossRef](#)]
233. Sharon, N. Carbohydrates as Future Anti-Adhesion Drugs for Infectious Diseases. *Biochim. Biophys. Acta* **2006**, *1760*, 527–537. [[CrossRef](#)] [[PubMed](#)]
234. Horemans, T.; Kerstens, M.; Clais, S.; Struijs, K.; van den Abbeele, P.; Assche, T.V.; Maes, L.; Cos, P. Evaluation of the Anti-Adhesive Effect of Milk Fat Globule Membrane Glycoproteins on *Helicobacter Pylori* in the Human NCI-N87 Cell Line and C57BL/6 Mouse Model. *Helicobacter* **2012**, *17*, 312–318. [[CrossRef](#)]
235. Kvistgaard, A.S.; Pallesen, L.T.; Arias, C.F.; López, S.; Petersen, T.E.; Heegaard, C.W.; Rasmussen, J.T. Inhibitory Effects of Human and Bovine Milk Constituents on Rotavirus Infections. *J. Dairy Sci.* **2004**, *87*, 4088–4096. [[CrossRef](#)]
236. Martín-Sosa, S.; Martín, M.-J.; Hueso, P. The Sialylated Fraction of Milk Oligosaccharides Is Partially Responsible for Binding to Enterotoxigenic and Uropathogenic *Escherichia Coli* Human Strains. *J. Nutr.* **2002**, *132*, 3067–3072. [[CrossRef](#)] [[PubMed](#)]
237. Schrotten, H.; Hanisch, F.G.; Plogmann, R.; Hacker, J.; Uhlenbruck, G.; Nobis-Bosch, R.; Wahn, V. Inhibition of Adhesion of S-Fimbriated *Escherichia Coli* to Buccal Epithelial Cells by Human Milk Fat Globule Membrane Components: A Novel Aspect of the Protective Function of Mucins in the Nonimmunoglobulin Fraction. *Infect. Immun.* **1992**, *60*, 2893–2899. [[CrossRef](#)] [[PubMed](#)]
238. Simon, P.M.; Goode, P.L.; Mobasser, A.; Zopf, D. Inhibition of *Helicobacter Pylori* Binding to Gastrointestinal Epithelial Cells by Sialic Acid-Containing Oligosaccharides. *Infect. Immun.* **1997**, *65*, 750–757. [[CrossRef](#)]
239. Sprong, R.C.; Hulstein, M.F.E.; Lambers, T.T.; van der Meer, R. Sweet Buttermilk Intake Reduces Colonisation and Translocation of *Listeria Monocytogenes* in Rats by Inhibiting Mucosal Pathogen Adherence. *Br. J. Nutr.* **2012**, *108*, 2026–2033. [[CrossRef](#)]
240. Wang, X.; Hirno, S.; Wadström, T.; Willén, R. Inhibition of *Helicobacter Pylori* Infection by Bovine Milk Glycoconjugates in a BALB/cA Mouse Model. *J. Med. Microbiol.* **2001**, *50*, 430–435. [[CrossRef](#)] [[PubMed](#)]
241. Manoni, M.; Di Lorenzo, C.; Ottoboni, M.; Tretola, M.; Pinotti, L. Comparative Proteomics of Milk Fat Globule Membrane (MFGM) Proteome across Species and Lactation Stages and the Potentials of MFGM Fractions in Infant Formula Preparation. *Foods* **2020**, *9*, 1251. [[CrossRef](#)]
242. Hernell, O.; Timby, N.; Domellöf, M.; Lönnnerdal, B. Clinical Benefits of Milk Fat Globule Membranes for Infants and Children. *J. Pediatr.* **2016**, *173*, S60–S65. [[CrossRef](#)] [[PubMed](#)]
243. Lee, H.; Padhi, E.; Hasegawa, Y.; Larke, J.; Parenti, M.; Wang, A.; Hernell, O.; Lönnnerdal, B.; Slupsky, C. Compositional Dynamics of the Milk Fat Globule and Its Role in Infant Development. *Front. Pediatr.* **2018**, *6*, 313. [[CrossRef](#)]
244. da Silva, R.C.; Colleran, H.L.; Ibrahim, S.A. Milk Fat Globule Membrane in Infant Nutrition: A Dairy Industry Perspective. *J. Dairy Res.* **2021**, *88*, 105–116. [[CrossRef](#)] [[PubMed](#)]
245. Timby, N.; Domellöf, M.; Lönnnerdal, B.; Hernell, O. Supplementation of Infant Formula with Bovine Milk Fat Globule Membranes. *Adv. Nutr.* **2017**, *8*, 351–355. [[CrossRef](#)] [[PubMed](#)]