



**HAL**  
open science

# Non-native Nematode *Ashworthius sidemi* Currently Dominates the Abomasal Parasite Community of Cervid Hosts in the Czech Republic

Jan Magdálek, G. Bourgoïn, Jaroslav Vadlejch

## ► To cite this version:

Jan Magdálek, G. Bourgoïn, Jaroslav Vadlejch. Non-native Nematode *Ashworthius sidemi* Currently Dominates the Abomasal Parasite Community of Cervid Hosts in the Czech Republic. *Frontiers in Veterinary Science*, 2022, 9, 10.3389/fvets.2022.862092 . hal-04169063

**HAL Id: hal-04169063**

**<https://vetagro-sup.hal.science/hal-04169063v1>**

Submitted on 23 Jul 2023

**HAL** is a multi-disciplinary open access archive for the deposit and dissemination of scientific research documents, whether they are published or not. The documents may come from teaching and research institutions in France or abroad, or from public or private research centers.

L'archive ouverte pluridisciplinaire **HAL**, est destinée au dépôt et à la diffusion de documents scientifiques de niveau recherche, publiés ou non, émanant des établissements d'enseignement et de recherche français ou étrangers, des laboratoires publics ou privés.



# Non-native Nematode *Ashworthius sidemi* Currently Dominates the Abomasal Parasite Community of Cervid Hosts in the Czech Republic

Jan Magdálek<sup>1</sup>, Gilles Bourgoïn<sup>2,3</sup> and Jaroslav Vadlejch<sup>1\*</sup>

<sup>1</sup> Department of Zoology and Fisheries, Faculty of Agrobiology, Food and Natural Resources, Czech University of Life Sciences Prague, Prague, Czechia, <sup>2</sup> Laboratory of Veterinary Parasitology, Université de Lyon, VetAgro Sup – Campus Vétérinaire de Lyon, Marcy l'Etoile, France, <sup>3</sup> Laboratoire de Biométrie et Biologie Évolutive, CNRS, UMR 5558, Université de Lyon, Université Lyon 1, Villeurbanne, France

## OPEN ACCESS

### Edited by:

Stefania Zanet,  
University of Turin, Italy

### Reviewed by:

Stefano Catalano,  
Moredun Research Institute,  
United Kingdom  
Paweł Nosal,  
University of Agriculture in  
Krakow, Poland  
Claudia Romeo,  
Experimental Zooprophyllactic  
Institute of Lombardy and Emilia  
Romagna (IZSLER), Italy

### \*Correspondence:

Jaroslav Vadlejch  
vadlejch@af.czu.cz

### Specialty section:

This article was submitted to  
Parasitology,  
a section of the journal  
Frontiers in Veterinary Science

**Received:** 25 January 2022

**Accepted:** 04 April 2022

**Published:** 28 April 2022

### Citation:

Magdálek J, Bourgoïn G and  
Vadlejch J (2022) Non-native  
Nematode *Ashworthius sidemi*  
Currently Dominates the Abomasal  
Parasite Community of Cervid Hosts  
in the Czech Republic.  
*Front. Vet. Sci.* 9:862092.  
doi: 10.3389/fvets.2022.862092

*Ashworthius sidemi* is an abomasal nematode typical for Asiatic cervids such as sambar (*Rusa unicorn*) or sika deer (*Cervus nippon*). This non-native parasite was introduced into Europe via sika deer in the late 19th and early 20th centuries. The current dynamic spread of this parasite amongst autochthonous wild cervids occurs independently of human activities, and *A. sidemi* has a negative impact on the health of wild ruminants and may pose a threat to the conservation of endangered wild ungulates and to livestock. This invasive parasite has been previously detected in the Czech Republic, but more accurate information on *A. sidemi* is required. Only limited information is generally available on the factors influencing the spread of abomasal nematodes in wild ruminants, so more information is necessary for planning effective strategies of parasite control. We therefore conducted a survey on the abomasal nematodes in cervids in both game reserves and hunting grounds across the Czech Republic, taking into account the hosts (species, age, sex) and environmental factors (monthly average temperature). The abomasa of 104 animals belonging to five cervid species originating from various locations of the country were collected. Data on host (species, sex, and age group) and the monthly average temperature in the region were obtained for each animal. The parasitological analyses indicated that 92% of the abomasa were infected by nematodes. *Ashworthius sidemi* was the most prevalent (72%) and abundant (80% of the total recovered individuals) nematode species and was detected in all cervid species except white-tailed deer. The intensity of *A. sidemi* was highest in roe deer (*Capreolus capreolus*) and fallow deer (*Dama dama*), but *A. sidemi* abundance did not depend substantially on the host or environmental factors. In contrast, the abundance of nematodes from the subfamily Ostertagiinae was influenced by the host species and temperature. Parasitic load was significantly higher in roe deer and during the warmer periods of the survey. We also detected another non-native nematode species, *Spiculoptera houndemeri*. The results of our study suggest that the non-native nematode *A. sidemi* is now widespread amongst cervid hosts in the Czech Republic, probably due to the high sensitivity of autochthonous cervids to *A. sidemi* infections as well as adaptation of this parasite to the current climatic conditions of this country.

**Keywords:** wild ruminants, gastrointestinal tract, necropsy, parasitic load, roe deer, temperature

## INTRODUCTION

Trichostrongylid nematodes (trichostrongylids) are globally considered to be amongst the most important parasites in ruminants. These parasites usually occur in mixed infections of several species (1, 2). The intensities of trichostrongylid infections are lower in wild ruminants than livestock, but infection may affect the health and fitness of their host under specific circumstances, with potential consequences at both the individual and population levels (3–5).

Emerging diseases associated with alien (non-native) parasites can lead to increased morbidity and mortality in native host populations (6). The introduction of alien species can take the form of an invasion if it is established and spreads on the new site. Co-invasion may occur if the parasites of the newcomer host species are transmitted and established in the populations of the native hosts. The virulence of alien parasites is also often higher in native hosts than in the original (alien) host (7). Introduction of non-native trichostrongylid nematodes thus can pose a threat to endangered wild ruminants and hinder reintroduction efforts (8, 9).

Several studies on cervids have found that abomasal nematodes were the most prevalent trichostrongylids of the gastrointestinal (GI) tract, with the subfamily Ostertagiinae (ostertagids) repeatedly reported as the dominant GI parasites of wild cervids in Europe and North America (10–12). The diversity of communities of parasitic nematodes, however, can vary over time and space (13). An association of a parasite with a new host is allowed if they encounter one another and are biologically compatible (14). Biocompatible parasites can range from specialists to generalists (capable of infecting a limited number of hosts and a wide range of hosts, respectively). For example, the majority of the abomasal nematodes of ruminants are considered generalists (15, 16). Barriers preventing encounters can be penetrated under specific circumstances, e.g., due to ecological perturbations or human activity (17, 18). Anthropogenic translocations of domestic sheep and goats have historically caused the colonization of Nearctic cervids by *Haemonchus contortus* (subfamily Haemonchiinae), which is currently a dominant parasite of white-tailed deer (*Odocoileus virginianus*) in North America (12).

The non-native abomasal nematode *Ashworthius sidemi* (subfamily Haemonchiinae) has more recently emerged amongst European ruminants. This parasite occurs primarily in Asiatic cervids. It has been described in sika deer (*Cervus nippon hortulorum*) from the far east of Russia (19) but occurs naturally in sambar (*Rusa unicolor*) from northern Vietnam (20). *Ashworthius sidemi* in European wild ruminants has been frequently reported since the last decade of the 20th century, but this blood-sucking nematode was probably introduced into Europe via sika deer (*Cervus nippon*) a century earlier. This host has been introduced into several European countries to diversify the species spectrum of game. Imported sika deer belong mainly to the Japanese (*Cervus nippon nippon*) and eastern Russian subspecies (*Cervus nippon hortulorum*), but various subspecies from different areas have been mixed and intercrossed during its acclimatization in Europe (21). Animals were initially kept in game reserves and deer parks until World War II. Many

fences were later damaged, and escaped individuals gave rise to the current free populations (21, 22). Studies from countries where sika deer were also introduced, such as France or Ukraine, indicated that *A. sidemi* became a part of the parasitic fauna of other cervid species such as the fallow deer (*Dama dama*), red deer (*Cervus elaphus*), and roe deer (*Capreolus capreolus*) (23–25). The migratory behavior of some cervid species probably allowed the spread of this alien parasite into new areas and the colonization of further hosts, including endangered species. For example, *A. sidemi* was not detected in Poland until the late 1990s. This nematode subsequently became a major pathogen of populations of the European bison from two distant areas during a relatively short period. Infection of this host has been associated with abomasitis (26) and with a decrease in the number of red blood cells (27). Migrating red deer was considered to be the source of infection in both cases (28, 29). Populations of endangered Tatra chamois (*Rupicapra rupicapra tatraica*) currently face a similar threat, because *A. sidemi* was found in Alpine chamois (*Rupicapra rupicapra*) and the sympatric red deer (8). More recently, increases in *A. sidemi* prevalence and infection intensity have been reported in locations where the parasite occurs (30) and has dynamically spread to a region where it had not been previously recorded (31). Further unintended introductions may also occur with the translocations of wild ruminants (32).

The population dynamics of parasites and their spread amongst sylvatic hosts are affected by both environmental and biological factors (18). Trichostrongylids develop directly with free-living stages, so their dynamics depend strongly on seasonal changes in temperature and humidity (33). Larval activity and development are inhibited or completely stopped at low temperatures. Conversely, energy reserves are depleted at long-term high temperatures due to hyperactivity and larval deaths (34). Sufficient moisture is necessary for the larvae to hatch and disperse on the pasture (35). The level of parasitic load may also be affected by the age and sex of the host due to differences in behavior and immune status (36).

These factors are essential for our understanding of the biology and epidemiology of these parasites, but only limited data for cervid hosts are available (37, 38). Likewise, information about the communities of abomasal nematodes in wild ruminants in the Czech Republic (CR) is still scarce. No comprehensive data on the prevalence and abundance of this invasive parasite, and the ecological factors influencing them, have yet been published, even though *A. sidemi* was detected in the CR in the last century (39).

We aimed to fill this knowledge gap using abomasa collected from wild ruminants from both game reserves and hunting grounds in various regions of the CR to: (i) identify the species richness of abomasal nematodes, with an emphasis on *A. sidemi*, and (ii) evaluate the effects of host and environmental factors on the abundance of abomasal nematodes.

## MATERIALS AND METHODS

### Study Areas and Animals

The research was conducted in both game reserves and hunting grounds across the CR (central Europe) (Figure 1). A European continental climate with warm, dry summers and relatively cold

winters is typical for the CR (40). The average temperature in each locality at the time of culling was obtained from the Czech Hydrometeorological Institute. The following three groups were formed based on temperature: (i) cold ( $<0^{\circ}\text{C}$ ,  $n = 31$ ), (ii) mild ( $0\text{--}5^{\circ}\text{C}$ ,  $n = 60$ ), and (iii) warm ( $5\text{--}16^{\circ}\text{C}$ ,  $n = 8$ ).

GI tracts were collected by state-owned forestry companies, owners of game reserves, or individual gamekeepers from wild ruminants culled in accordance with the National Hunting Regulations during the hunting seasons of 2016–2019. An additional abomasum was opportunistically collected from a dead moose following collision with a vehicle.

A total of 104 abomasa was collected and necropsied for parasites. The animals included both species common in the CR, such as roe deer ( $n = 40$ ), fallow deer ( $n = 31$ ), red deer ( $n = 20$ ), and sika deer ( $n = 10$ ), and less-common species, one moose (*Alces alces*) and two white-tailed deer (*Odocoileus virginianus*). The latter species naturally occurs in the Nearctic region and was repeatedly introduced into the CR. A total of 24 (77%) fallow deer involved in this study were culled at a game reserve with high animal density (10 animals per hectare). The animals were annually dewormed at the beginning of the year in January 2018 and 2019.

The ages of the animals were estimated based on tooth wear (both sexes) and the development of antlers in males (41, 42). The animals were then assigned to three age groups: (i) fawns younger than 1 year ( $n = 26$ ), (ii) yearlings and young individuals ( $n = 26$ ), and (iii) adults older than 3 years ( $n = 47$ ).

## Necropsies

The GI tracts were transported to the laboratory as soon as possible after evisceration. Abomasa were subjected to a complete parasitological necropsy, including the collection of larval stages in tissues (43). Ligated abomasa were separated from the rest of the GI tract and then opened longitudinally along the greater curvature. Organ contents together with mucosal washings were rinsed into separate buckets and then poured through 200 and 150- $\mu\text{m}$  mesh sieves. Abomasal mucous membranes were then immersed in a saline solution and left overnight at room temperature to release arrested larval stages. The fluid obtained was poured through a 38- $\mu\text{m}$  mesh sieve to separate released larvae from the debris (44). All recovered nematodes were fixed in 70% ethanol until processed. The nematodes were briefly immersed in a phenol-alcohol solution (80 parts of melted phenol crystals and 20 parts of a 96% ethanol solution) before examination to clarify the visibility of morphological characters.

Nematodes belonging to the subfamily Haemonchiinae were identified based on the morphology of the neodont and deirids, the morphology and length of spicules, and the structure of the copulatory bursa (24, 45). All males were examined if fewer than 100 individuals were recovered; at least ten percent of the males from the subfamily Haemonchiinae were examined in all cases. All recovered male ostertagids were identified based on the structure of the copulatory bursa and the structure and length of spicules (46) taking polymorphism into account (47). Female ostertagids were pooled into one group, because their morphological identification is both extremely difficult and time-consuming. Nematode larvae were likewise identified only as

fourth (L4) stage. The nematodes were studied using an Olympus BX51 microscope with a Promicam 3-3CP Sony Pregius camera running QuickPHOTO MICRO 3.0 software.

## Data Analysis

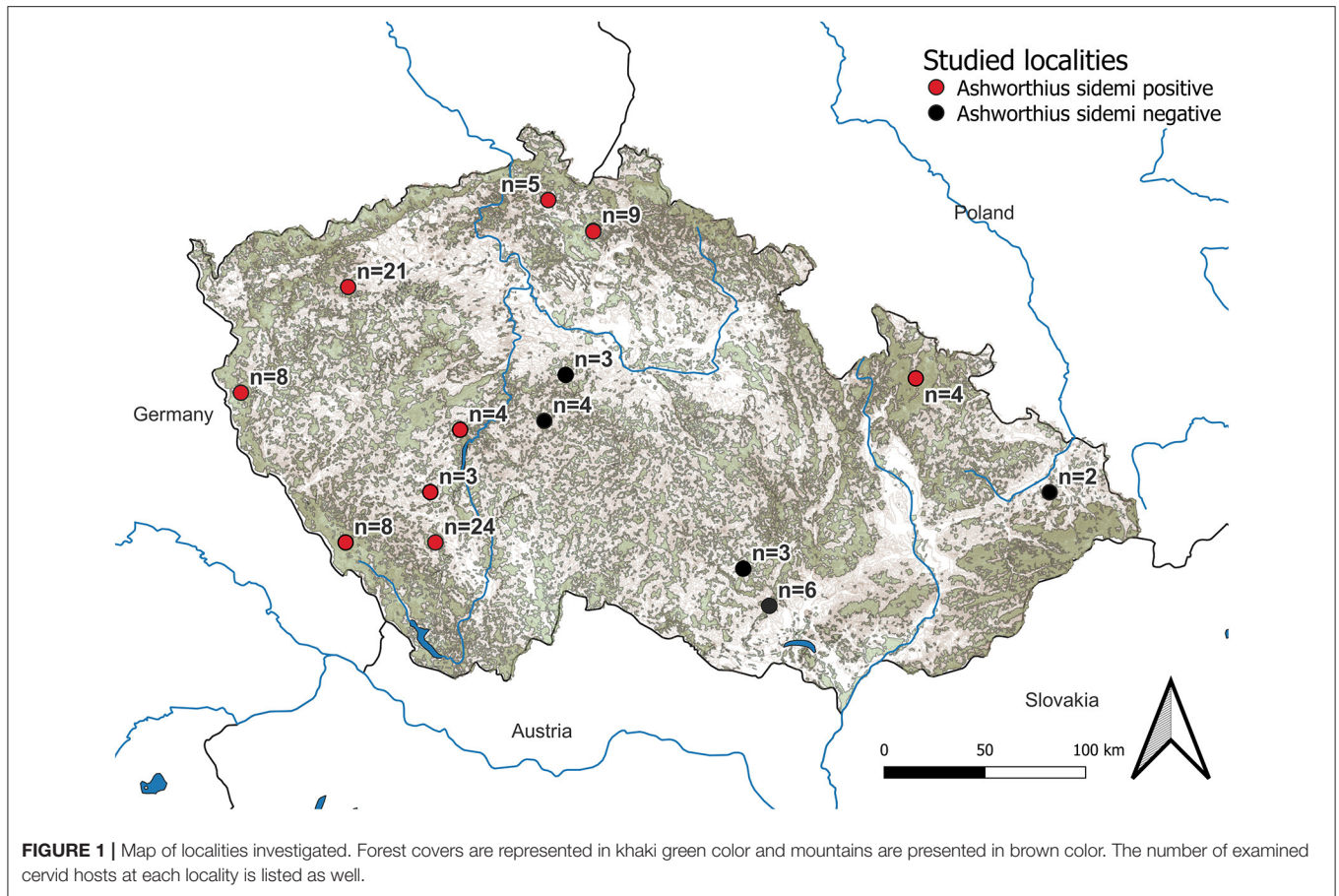
We used three measures to describe parasitic loads: prevalence, intensity, abundance, and species richness. The 95% confidence intervals (CI) for the quantitative descriptors of parasitic loads were calculated. Prevalence was calculated as the proportion of individuals of a particular host species infected with a particular nematode species from all hosts examined. Intensity was calculated as the number of nematodes recovered from an infected host. Abundance was calculated as the number of nematodes in the hosts examined regardless of whether they were infected. Species richness was expressed as the number of nematode species identified in a particular host species. Species richness was compared between species, sexes, age groups, and temperature categories (described in Study areas and animals) using the non-parametric Kruskal-Wallis test. Significant results were visualized using the ggplot2 R package (48). The effects of environmental (temperature, expressed as a continuous variable) and host (species, sex, and age) factors on parasite abundance were estimated using multiple regression on the abundance of *A. sidemi* and pooled ostertagids (log-transformed to achieve a normal distribution). Two white-tailed deer and one moose were excluded from the analysis of abundance because of their low numbers. We selected the model with the lowest Akaike information criterion corrected for small sample size (AICc) and retained the simplest model (49) when two or more competing models had a  $\Delta\text{AICc} < 2$ . The normality of the residuals was assessed using the Lilliefors (Kolmogorov-Smirnov) test. All calculations and statistical tests were performed using R 4.0 (50).

## RESULTS

Abomasal nematodes were recovered from 92% [95% CI = 85–96] of all cervids; the prevalences of the nematode species identified in this survey are presented in **Table 1**. The median intensity was 102 individuals [95% CI = 69–176]. The total number of nematodes detected in the abomasa of the cervids was almost 27,000. Histotrophic (tissue dwelling) larvae were recovered in low numbers (from 1 to 26 individuals) from 7% [95% CI = 3–13] of the mucous membranes.

Most of the abomasa were infected with one ( $n = 26\%$ ), two ( $n = 26\%$ ), or three ( $n = 29\%$ ) nematode species. Species richness varied during the year ( $p = 0.04$ ). Animals culled during the warmer times of the year ( $5\text{--}16^{\circ}\text{C}$ ) were infected with more species than those culled in winter (**Figure 2A**). Species richness was highest in roe deer (**Figure 2B**).

*Ashworthius sidemi* was detected in 72% [95% CI = 63–80] of the animals and was the most abundant nematode ( $n = 21,646$ ; 80% of all nematodes). This parasite was a dominant component of the community of abomasal nematodes in most of the cervid species (**Figure 2C**) and occurred in 9 of 14 localities (**Figure 1**). The median intensity of *A. sidemi* infections in cervids was 86 [95% CI = 40–197], with a maximal intensity of infection ( $n =$



**TABLE 1 |** Prevalence of abomasal nematodes in the main cervids culled between 2016 and 2019. Moose (single case) and white-tailed deer ( $n = 2$ ) are not included in the table due to the low number of individuals examined.

Nematode species	Host species			
	Roe deer ( $n = 40$ )	Red deer ( $n = 20$ )	Fallow deer ( $n = 31$ )	Sika deer ( $n = 10$ )
	Prevalence % (CI)			
Overall nematodes	98 (85–99)	95 (73–99)	83 (66–94)	99 (54–99)
<i>Ashworthius sidemi</i>	75 (60–80)	65 (43–82)	74 (57–87)	80 (48–95)
<i>Haemonchus contortus</i>	12 (5–26)	–	–	–
<i>Ostertagia leptospicularis/kolchida</i>	73 (57–84)	40 (22–61)	48 (32–65)	10 (0.2–45)
<i>Spiculopteragia spiculoptera/mathevossiani</i>	45 (35–60)	40 (22–61)	3 (0.8–17)	30 (10–60)
<i>Spiculopteragia asymmetrica</i>	10 (3–20)	5 (0.1–25)	39 (24–56)	20 (5–52)
<i>Spiculopteragia houdemeri</i>	20 (10–35)	5 (0.1–25)	3 (0.8–17)	40 (17–69)

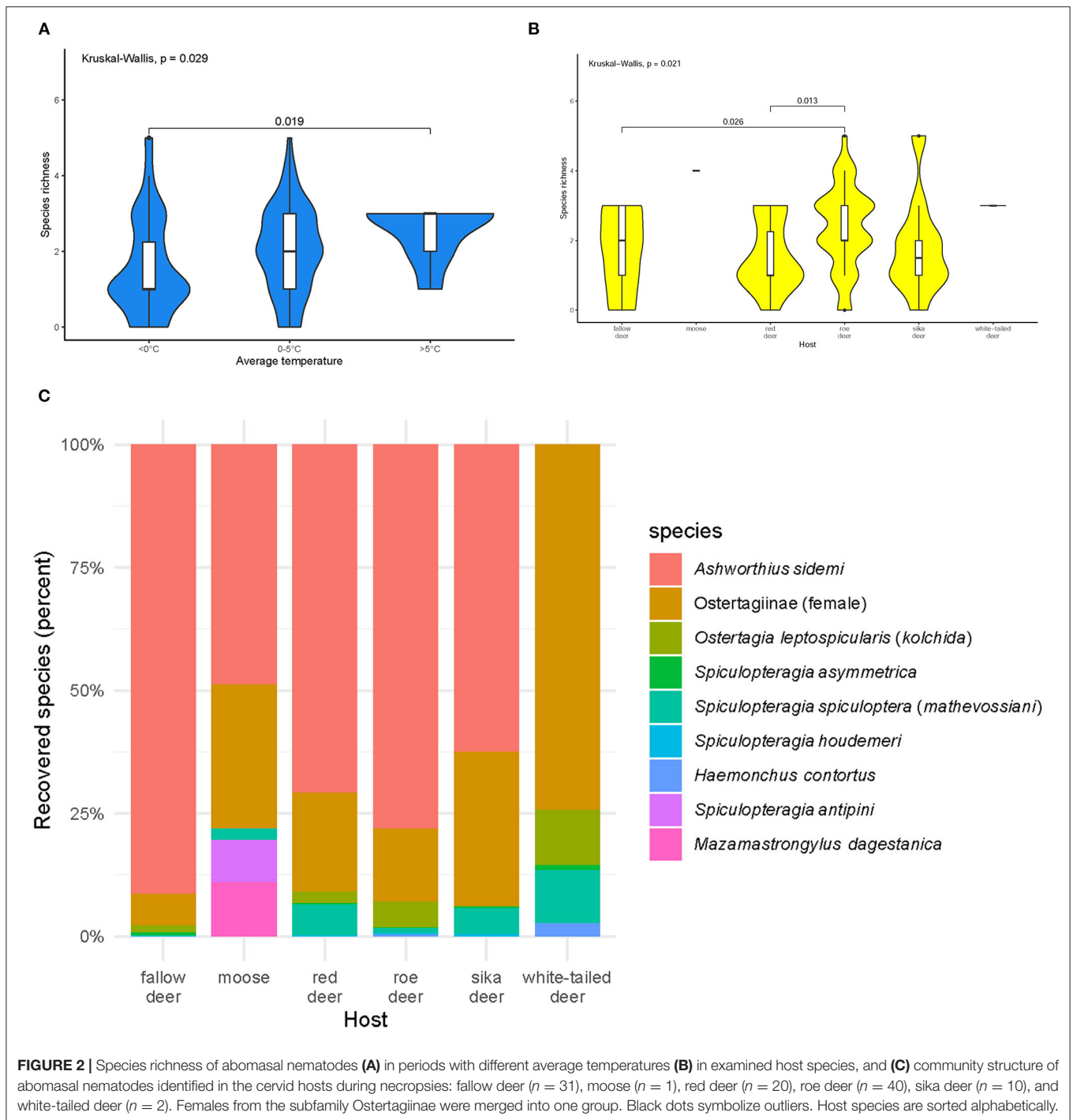
CI, upper and lower limit of 95% confidence interval based on the binomial distribution.

2,260) in a three-year-old female roe deer. Intensities of *A. sidemi* detected in the evaluated cervid hosts are shown in **Figure 3**.

The infrapopulation of *A. sidemi* consisted predominantly of adults. Juveniles occurred in 16% [95% CI = 10–25] of the abomasa and formed a minor part of the infrapopulation. The numbers of these early adults varied from 1 to 81. Based on the selected model (**Supplementary Table 1A**), the abundance of *A. sidemi* did not significantly depend on host or environmental factors.

Five roe deer and one white-tailed deer were infected with *H. contortus* (6% prevalence [95% CI = 2–13] of all cervids). Coinfection with *A. sidemi* and *H. contortus* was not observed in any of the abomasa.

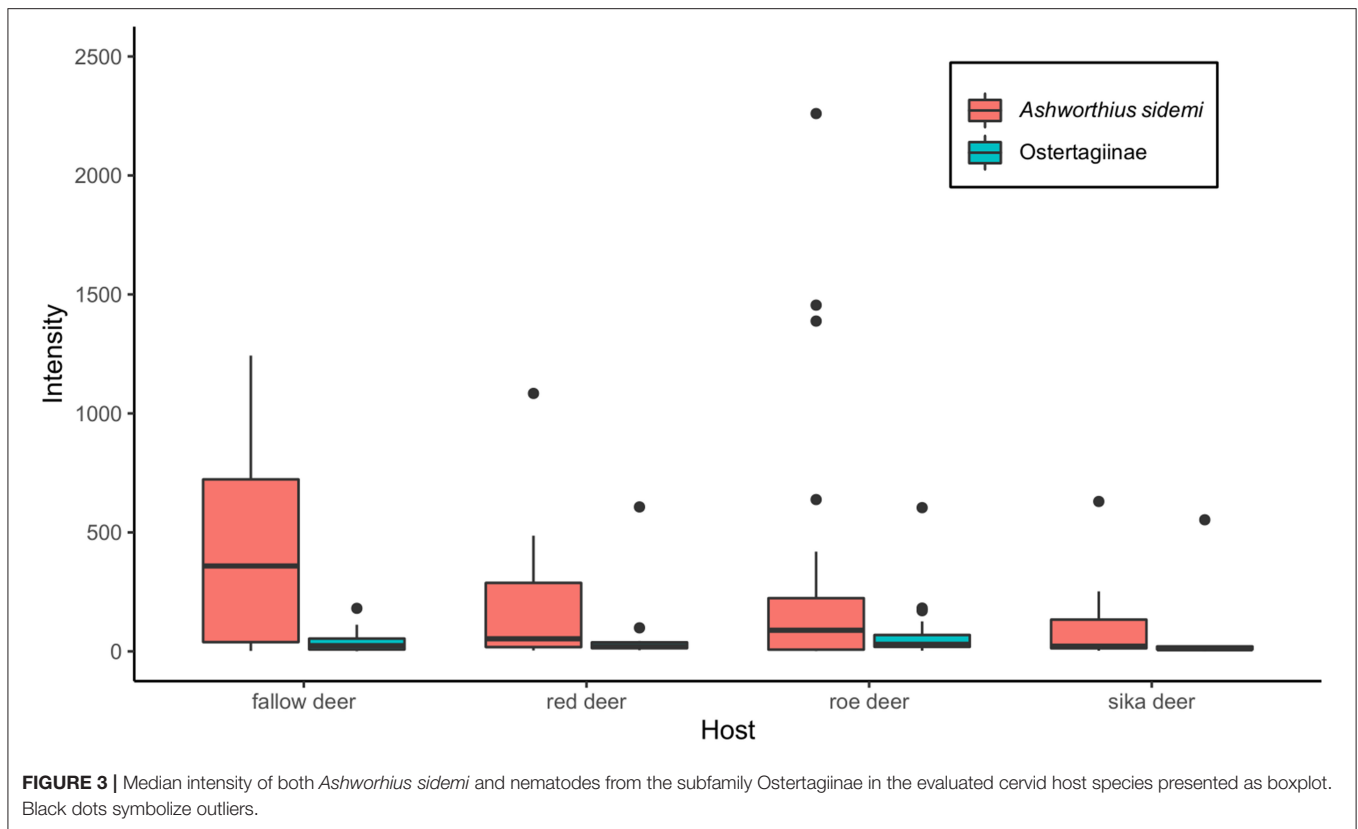
Polymorphic ostertagids were the most frequent (77% prevalence [95% CI = 67–84]) abomasal nematodes recovered from the culled cervids. The intensity of infection with these nematodes ranged from 1 to 607 adults. The median intensity was 26 (95% CI = 20–42). For intensity of nematodes from



the subfamily Ostertagiinae detected in the evaluated cervid hosts (see **Figure 3**). *Ostertagia leptospicularis* and *O. kolchida* were the most frequently identified ostertagids (52% prevalence [95% CI = 43–63]), followed by *Spiculoptera spiculoptera* and *S. mathevossiani* (32% prevalence [95% CI = 23–42]). These nematodes were common in roe deer and red deer, and *Spiculoptera asymmetrica* (19% prevalence [95% CI = 12–28]) was recovered mainly from fallow deer and sika deer (**Table 1**).

*Spiculoptera houdemeri* (13% prevalence [95% CI = 8–21]) was detected in red deer, roe deer, fallow deer, and sika deer. Minor male morphotypes of *S. asymmetrica* and *S. houdemeri*: *Spiculoptera quadrispiculata* and *Spiculoptera andreavae*, respectively, were not detected during this survey.

The model selected based on AICc (**Supplementary Table 1B**) indicated that the abundance of ostertagids was positively affected by combined factors of host species and monthly average



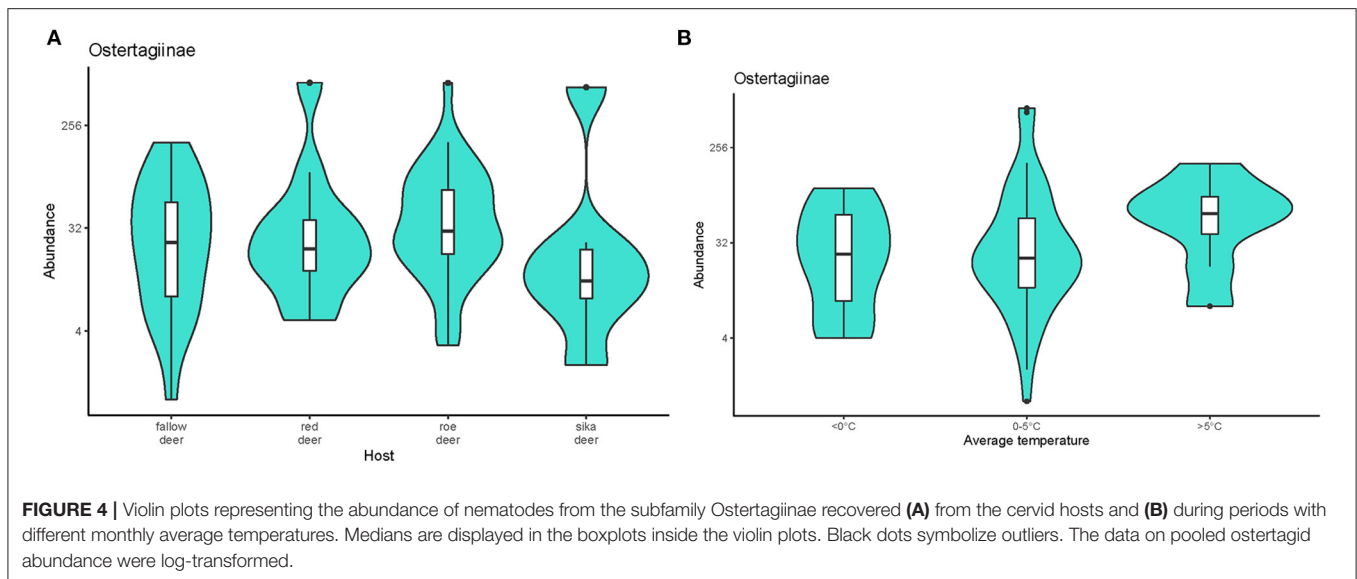
temperature ( $w = 0.447$ ). Estimates from the selected model are given in the **Supplementary Table 2**. The abundance of these parasites was higher in roe deer than the other cervids (**Figure 4A**). Abundance was significantly lower in animals culled during months with average temperatures  $<0^{\circ}\text{C}$  than at warmer times of the year (**Figure 4B**). No effect of sex or age was detected.

## DISCUSSION

Abomasal nematodes have been repeatedly identified as the most prevalent and abundant GI parasites in cervids (1, 51). Consistent with these results, 92% of the animals in our survey were infected with abomasal nematodes. Most of the abomasa were infected with one to three nematode species. Co-infections with multiple nematode species have been previously described (2, 16, 51). A study conducted in the CR in the 1970s listed *A. sidemi* as the dominant parasite of sika deer and reported this parasite in sympatric deer and mouflon (52). We found this parasite in a wide range of autochthonous hosts, including red deer, roe deer, fallow deer, and moose across the country. This expansion may be due to the rapid increase in the number of sika deer and its dynamic spread (53). The animals in our study were predominantly infected with *A. sidemi*, accompanied by several ostertagids. We report for the first time the presence of *S. houdemeri* in the Czech territory and in all species studied except moose and white-tailed deer. The occurrence of this nematode was known in the past only in Muntjack deer (*Muntjacus muntjac*)

(54) and sambar (*Rusa unicolor*) (20) from Vietnam and in sika deer from Japan (55). It has been identified more recently in sika deer from Germany (56) and Austria (57), although this cervid species was acclimatized in Europe more than a 100 years ago. *Spiculopteragia houdemeri* was probably introduced into the CR after the fall of the Iron Curtain when the migration of infected sika deer from Austria was allowed (57). This parasite currently occurs in native cervids in localities co-habited with sika deer. Most of the nematode species detected in our survey infected all host species, except for *S. antipini* and *M. dagestanica*, which are considered typical parasites of moose (58), and *H. contortus*, which was found only in roe deer and white-tailed deer.

Both the richness of nematode species and the abundance of ostertagids were higher in the abomasa of roe deer compared to the other host species. Hofman (59) divided ruminants into three feeding types based on the morphophysiological differences in their digestive tracts and on their grazing behaviors: (i) concentrate selectors, (ii) browsers, and (iii) intermediate feeders. As a concentrate selector, roe deer have a different foraging behavior (including selective grazing of easily digestible plants) than the grazers such as mouflons or the other species studied, intermediate feeders with a dietary preference for grass. The defensive mechanisms against parasites also differ between these trophic groups. Grazers develop effective immune responses, but concentrate selectors tend to avoid infection (60). The avoidance of pastures used by other ruminants, and self-medication by foraging tannin-rich legumes, are behavioral methods that roe deer use to reduce the intake of infective larvae



and thus nematode load (4, 61). These mechanisms, however, may be considerably limited in hunting grounds co-habited with a high density of more competitive cervid species and in fragmented agricultural landscapes. Interspecific competition for food sources can decrease body weight in roe deer fawns and induce stress (62–64) which may increase susceptibility to GI nematodes. The roe deer in our study harbored the typical nematodes *O. leptospicularis* and *S. spiculoptera*, similar to red deer. Unlike red deer, though, the roe deer were more frequently infected with *S. asymmetrica* and *S. houdemerii* in game reserves shared with fallow deer and sika deer, respectively. High intensities of infection with abomasal nematodes and the presence of atypical nematode species have been previously found in roe deer from an area inhabited by multiple species of cervids (38).

*Haemonchus contortus* contributed to the higher richness of abomasal nematodes in roe deer from hunting grounds where contact with livestock was possible. The transmission of *H. contortus* between roe deer and small domestic ruminants has previously been discussed (65). Co-infections with *H. contortus* and *A. sidemi* occur (24, 25), but only a few *H. contortus* individuals were detected in reported cases (8). We have not observed any co-occurrence of these nematode species in the male infrapopulations we investigated, but co-infections cannot be completely ruled out as we examined only subsample of infrapopulation. This parasite may not be able to compete with *A. sidemi* in the long term if its typical hosts, small domestic ruminants, are not present in hunting grounds. Similarly, *H. placei* infections gradually declined in sheep after reinfection with *H. contortus* on pasture where cattle were not present (66). The prevalence of *A. sidemi* was surprisingly high in locations where *H. contortus* was previously abundant (67). This high prevalence may have been caused by both the disappearance of potential sources of *H. contortus* during gradual changes from agricultural landscapes inhabited by livestock to forest in recent decades in the CR and by the dispersion of sika deer into this area (53, 68).

Only limited information is available on *A. sidemi* as part of the community of abomasal nematodes, indicating that this parasite is more abundant than native nematode species (25, 69). Similarly, most of the nematodes detected in our survey were *A. sidemi*. This parasite prevailed over the ostertagids in its prevalence, maximal numbers of recovered individuals, and biomass. The median abundance of *A. sidemi* did not differ significantly between host species, but fallow deer were more likely to be infected with higher numbers of *A. sidemi* than the other cervids. Management may have had a confounding effect on the intensity of *A. sidemi* infection, because the majority (almost 80%) of fallow deer were culled at game reserves with higher animal densities compared to open hunting grounds. The density of cervid hosts and both the intensity and abundance of parasites have previously been positively correlated (36). Aggregation during additional feeding can also cause social stress that may reduce immunity (70–72). The transmission of nematodes in confined spaces could therefore be amplified by an increased susceptibility of the host. The dominance of *A. sidemi* and low species richness in fallow deer could be due to different susceptibilities of nematode species to anthelmintic treatment (73). Fallow deer in the game reserves in this survey were dewormed annually at the beginning of the year (January 2018 and 2019).

The intensity of abomasal nematodes was highest in roe deer from the Židlov game reserve (50°37'14" N., 14°51'37" E), which is co-habited by the European bison. The European bison is highly susceptible to *A. sidemi* infection and infected individuals often carry thousands of nematodes (29, 32), so this host species is a significant source of infection for sympatric ruminants. Red deer and moose may play key roles in the introduction of *A. sidemi* into new localities due to their extensive home range and long-distance migration (74). The spread of *A. sidemi* with red deer from the CR to neighboring countries can be expected in the near future, similar to that of the giant liver fluke *Fascioloides magna* recently observed in Bavaria (German



territory adjacent to the CR) (75). Intensities of infections with *A. sidemi* become high after it is introduced into hunting grounds, especially in roe deer, which may be highly susceptible. As the most abundant and widely distributed cervid in the CR (76), roe deer contribute significantly to the local spread of *A. sidemi* in the wild. Roe deer may also pose potential risks of transmitting *A. sidemi* to livestock, especially in fragmented agricultural landscapes that allow contact between wild and domestic ruminants. Susceptibility to this parasite has previously been confirmed in sheep (77) and cattle (78).

The abundance of *A. sidemi* was not significantly affected by season or temperature. The intensity of infection was highest in a roe deer culled in November 2016, probably due to the accumulation of nematodes by grazing during summer and early autumn. We found no support for an important role of arrested larval development in winter; the numbers of recovered larvae were negligible, similar to a previous study (32). The L5 juvenile stage, if present, made up a minority of the nematode infrapopulation, and we isolated from 1 to >2,000 adults. A low prevalence of arrested larvae and winter transmission of trichostrongylids may be more common in wild ruminants than livestock (4, 79).

Environmental conditions, especially temperature and humidity, contribute significantly to the probability of survival and transmission of parasites, with developmental cycles involving free-living stages (80). The abundance of ostertagids in our study varied with average temperature. The abundances of these nematodes were significantly higher in months with average temperatures >0°C than in colder months (December 2016, February 2018, and January 2019). Winter intensities of ostertagid infections were previously lower in cervids from areas with mild climates (37, 38), possibly due to a lower transmission during winter (35) and to a gradual decline of infrapopulations of this parasite in summer and autumn. Other factors such as the anthelmintic treatment of farmed cervids may also have contributed to the decline.

Based on our data, we cannot confirm the effect of acquired immunity on parasitic load for any group of abomasal nematodes, because nematode abundance did not differ between older animals and fawns. Some previous studies based on necropsies (11, 81) as well as the metabarcoding of larvae isolated from fecal samples (82) have also demonstrated a limited effect on the abundance and intensity of infection by ostertagids. The abundance of the parasites was also not affected by the sex of the host.

Our study was limited by specific factors, mainly the type of examination method used. Sample size generally depended on the culling plan of individual hunting grounds and on the willingness of their owners to provide biological material. Hunting laws in the CR allow the culling of ungulates only during a strictly defined period. We therefore could not monitor the seasonal dynamics of parasitic load throughout the year. We also could not obtain an equal representation of all groups, because the legal hunting season varies between species, sexes, and age cohorts. For example, obtaining females was not possible when the immunosuppressive effect of parturition on nematode infection could be expected. Loads with abomasal nematodes

could be affected by other factors that could not be evaluated in this survey, such as different availabilities of nutrients or levels of supplementary feeding. The nematode abundances may also have been affected by the selection of culled animals based on their body condition. Despite these unavoidable limitations, our research provides realistic insights into the communities of abomasal nematodes in cervids under the current conditions in the CR.

## CONCLUSION

Cervids under the current climatic and environmental conditions of the CR were infected with a wide spectrum of abomasal nematode species, with the predominance of *A. sidemi*. This non-native parasite was detected in a wide range of hosts, whereas its occurrence and abundance were not significantly affected by either environmental (monthly average temperature) or host factors (species, age, sex). The population growth and spread of sika deer in addition to the diversity of autochthonous host species and their high sensitivity to *A. sidemi* infections, have likely contributed to the recent invasive spread of this nematode amongst autochthonous ungulates. Our results demonstrated that *A. sidemi* can reach high intensities, especially in farmed fallow deer and in roe deer in hunting grounds. Red deer can introduce *A. sidemi* to new areas due to their distant migration, but roe deer can play a key role in the local spread of *A. sidemi* in the wild due to its widespread distribution and increasing numbers. Roe deer also pose a potential source of infection for livestock in sympatric zones. Longitudinal studies covering the summer and later spring are needed to obtain a comprehensive assessment of the seasonal dynamics of *A. sidemi* under the current climatic conditions of central Europe.

## DATA AVAILABILITY STATEMENT

The original contributions presented in the study are included in the article/**Supplementary Material**, further inquiries can be directed to the corresponding author.

## ETHICS STATEMENT

The animal study was reviewed and approved by Institutional ethics and animal welfare committee of the Czech University of Life Sciences Prague.

## AUTHOR CONTRIBUTIONS

JV and JM conceived and designed the study and interpreted the data. JV collected the samples. JM processed the samples (necropsies) and recovered and identified the parasites. JM and GB performed the statistical analyses and drafted the manuscript. JV and GB critically revised the manuscript. All authors accepted the final version of the manuscript.

## FUNDING

This research was financially supported by the Technology Agency of the Czech Republic, project No. TJ01000009.

## ACKNOWLEDGMENTS

The authors are grateful to the management staff of the state-owned forestry companies, the owners of the game reserves, and individual gamekeepers for providing samples for this

survey. This research was performed within the initiative of the Centre for Infectious Animal Diseases (CINeZ). We wish to acknowledge the reviewers for their valuable comments and improvements to the manuscript.

## SUPPLEMENTARY MATERIAL

The Supplementary Material for this article can be found online at: <https://www.frontiersin.org/articles/10.3389/fvets.2022.862092/full#supplementary-material>

## REFERENCES

- Pato FJ, Vázquez L, Díez-Baños N, López C, Sánchez-Andrade R, Fernández G, et al. Gastrointestinal nematode infections in roe deer (*Capreolus capreolus*) from the NW of the Iberian Peninsula: assessment of some risk factors. *Vet Parasitol.* (2013) 196:136–42. doi: 10.1016/j.vetpar.2013.01.027
- Carrau T, Martínez-carrasco C, Garijo MM, Alonso F, Vizcaino LL, Herrera-russert J, et al. Epidemiological approach to nematode polyparasitism occurring in a sympatric wild ruminant multi-host scenario. *J Helminthol.* (2021) 95:1–9. doi: 10.1017/S0022149X21000183
- Zaffaroni E, Citterio C, Sala M, Lauzi S. Impact of abomasal nematodes on roe deer and chamois body condition in an alpine environment. *Parassitologia.* (1997) 39:313–7.
- Gunn A, Irvine RJ. Subclinical parasitism and ruminant foraging strategies—a review. *Wildl Soc Bull.* (2003) 31:117–26.
- Pedersen AB, Fenton A. The role of antiparasite treatment experiments in assessing the impact of parasites on wildlife. *Trends Parasitol.* (2015) 31:200–11. doi: 10.1016/j.pt.2015.02.004
- Taraschewski H. Hosts and parasites as aliens. *J Helminthol.* (2006) 80:99–128 doi: 10.1079/JOH2006364
- Lymbery AJ, Morine M, Kanani HG, Beatty SJ, Morgan DL. Co-invaders: the effects of alien parasites on native hosts. *Int J Parasitol Parasites Wildl.* (2014) 3:171–7. doi: 10.1016/j.ijppaw.2014.04.002
- Nosal P, Kowal J, Wyrobisz-Papiewska A, Chovancová G. *Ashworthius sidemi* Schulz, 1933 (Trichostrongylidae: Haemonchinae) in mountain ecosystems – a potential risk for the Tatra chamois *Rupicapra rupicapra tatra* (Blahout, 1971/1972). *Int J Parasitol Parasit Wildl.* (2021) 14:117–20. doi: 10.1016/j.ijppaw.2021.01.010
- Radwan J, Demiaszkiewicz AW, Kowalczyk R, Lachowicz J, Kawalko A, Wójcik JM, et al. An evaluation of two potential risk factors, MHC diversity and host density, for infection by an invasive nematode *Ashworthius sidemi* in endangered European bison (*Bison bonasus*). *Biol Conserv.* (2010) 143:2049–53. doi: 10.1016/j.biocon.2010.05.012
- Manfredi MT, Di Cerbo AR, Tranquillo V, Nassuato C, Pedrotti L, Piccolo G. Abomasal nematodes of the red deer *Cervus elaphus* in north-eastern Italy. *J Helminthol.* (2007) 81:247–53. doi: 10.1017/S0022149X07739032
- Santín-Durán M, Alunda JM, Hoberg EP, de La Fuente C. Age distribution and seasonal dynamics of abomasal helminths in wild red deer from central Spain. *J Parasitol.* (2008) 94:1031–7. doi: 10.1645/GE-1109.1
- Hoberg EP, Kocan AA, Rickard LG. Gastrointestinal strongyles in wild ruminants. In: Samuel WM, Pybus MJ, Kocan AA, editors. *Parasitic Diseases of Wild Mammals*. Ames, IA: Iowa State University Press (2001). p. 193–227.
- Karbowiak G, Demiaszkiewicz AW, Pyziel AM, Wita I, Moskwa B, Werszko J, et al. The parasitic fauna of the European bison (*Bison bonasus*) (Linnaeus, 1758) and their impact on the conservation. Part 2 the structure and changes over time. *Acta Parasitol.* (2014) 59:372–9. doi: 10.2478/s11686-014-0253-z
- Combes C, de Buron I, Connors V. *Parasitism: The Ecology and Evolution of Intimate Interactions*. Bibliovault OAI Repository, Chicago, IL: University of Chicago Press (2002).
- Zaffaroni E, Manfredi MT, Citterio C, Sala M, Piccolo G, Lanfranchi P. Host specificity of abomasal nematodes in free ranging alpine ruminants. *Vet Parasitol.* (2000) 90:221–30. doi: 10.1016/S0304-4017(00)00240-5
- Winter J, Rehbein S, Joachim A. Transmission of helminths between species of ruminants in Austria appears more likely to occur than generally assumed. *Front Vet Sci.* (2018) 5:1–11. doi: 10.3389/fvets.2018.00030
- Hoberg EP, Zarlenga DS. Evolution and biogeography of *Haemonchus contortus*. linking faunal dynamics in space and time. In: Gasser R, Himmelstjerna GS, editors. *Haemonchus contortus* and Haemonchosis - Past, Present and Future Trends. *Adv Parasitol.* (2016) 93:1–30. doi: 10.1016/bs.apar.2016.02.021
- Kołodziej-Sobocińska M. Factors affecting the spread of parasites in populations of wild European terrestrial mammals. *Mammal Res.* (2019) 64:301–18. doi: 10.1007/s13364-019-00423-8
- Schulz RS. *Ashworthius sidemi* n. sp. (Nematoda, Trichostrongylidae) aus einem Hirsch (*Pseudaxis hortulorum*). *Z parasitenkd.* (1933) 5:735–9. doi: 10.1007/BF02121369
- Drózd J. Materials contributing to the knowledge of the helminth fauna of *Cervus (Russa) unicolor* Kerr and *Muntiacus muntjak* Zimm. of Vietnam, including two new nematode species: *Oesophagostomum labiatum* sp. n. and *Trichocephalus muntjaci* sp. n. *Acta Parasitol Pol.* (1973) 21:465–74.
- Bartoš L. Sika deer in continental Europe. In: McCullough DR, Takatsuki S, editors. *Sika deer: Biology and Management of Native and Introduced Populations*. Tokyo; Berlin; Heidelberg; New York, NY: Springer (2003). p. 573–94.
- Wolf R, Vavruněk J. Sika východní *Cervus nippon* Temm. Vzápadních Čechách. *Sborník Vědeckého lesnického Ústavu VŠZ v Praze.* (1975–1976) 18–19:185–99.
- Ferté H, Cléva D, Depaquit J, Gobert S, Léger N. Status and origin of Haemonchinae (Nematoda: Trichostrongylidae) in deer: a survey conducted in France from 1985 to 1998. *Parasitol Res.* (2000) 86:582–7. doi: 10.1007/PL00008534
- Lehrter V, Jouet D, Liénard E, Decors A, Patrelle C. *Ashworthius sidemi* Schulz, 1933 and *Haemonchus contortus* (Rudolphi, 1803) in cervids in France: integrative approach for species identification. *Infect Genet Evol.* (2016) 46:94–101. doi: 10.1016/j.meegid.2016.10.027
- Kuzmina T, Kharchenko V, Malega A. Helminth fauna of roe deer (*Capreolus capreolus*) in Ukraine: biodiversity and parasite community. *Vestn Zool.* (2010) 44:12–9. doi: 10.2478/v10058-010-0002-1
- Osińska B, Demiaszkiewicz AW, Lachowicz J. Pathological lesions in European bison (*Bison bonasus*) with infestation by *Ashworthius sidemi* (Nematoda, Trichostrongylidae). *Pol J Vet Sci.* (2010) 13:63–7.
- Kołodziej-Sobocińska M, Demiaszkiewicz AW, Pyziel AM, Marczuk B, Kowalczyk R. Does the blood-sucking nematode *Ashworthius sidemi* (Trichostrongylidae) cause deterioration of blood parameters in European bison (*Bison bonasus*)? *Eur J Wildl Res.* (2016) 62:781–5. doi: 10.1007/s10344-016-1037-6
- Drózd J, Demiaszkiewicz AW, Lachowicz J. Expansion of the Asiatic parasite *Ashworthius sidemi* (Nematoda, Trichostrongylidae) in wild ruminants in Polish territory. *Parasitol Res.* (2003) 89:94–7. doi: 10.1007/s00436-002-0675-7
- Demiaszkiewicz A, Lachowicz J, Osińska B. *Ashworthius sidemi* Nematoda, Trichostrongylidae in wild ruminants in Białowieża Forest. *Pol J Vet Sci.* (2009) 12:385–8.
- Demiaszkiewicz AW, Merta D, Kobielski J, Filip KJ, Pyziel AM. Expansion of *Ashworthius sidemi* in red deer and roe deer from the Lower Silesian

- Wilderness and its impact on infection with other gastrointestinal nematodes. *Acta Parasitol.* (2017) 62:853–7. doi: 10.1515/ap-2017-0103
31. Kuznetsov D, Romashova N, Romashov B. The first detection of *Ashworthius sidemi* (Nematoda, Trichostrongylidae) in roe deer (*Capreolus capreolus*) in Russia. *Vet Parasitol.* (2018) 14:200–3. doi: 10.1016/j.vprsr.2018.11.003
  32. Vadlejch J, Kyriánová IA, Rylková K, Zikmund M, Langrová I. Health risks associated with wild animal translocation: a case of the European bison and an alien parasite. *Biol Invasions.* (2017) 19:1121–5. doi: 10.1007/s10530-016-1306-z
  33. O'Connor LJ, Walkden-Brown SW, Kahn LP. Ecology of the free-living stages of major trichostrongylid parasites of sheep. *Vet Parasitol.* (2006) 142:1–15. doi: 10.1016/j.vetpar.2006.08.035
  34. Taylor MA, Coop RL, Wall RL. *Veterinary Parasitology*. 4th ed. Chichester: Wiley Blackwell (2015).
  35. Stromberg BE. Environmental factors influencing transmission. *Vet Parasitol.* (1997) 72:247–64. doi: 10.1016/S0304-4017(97)00100-3
  36. Body G, Ferté H, Gaillard JM, Delorme D, Klein F, Gilot-Fromont E. Population density and phenotypic attributes influence the level of nematode parasitism in roe deer. *Oecologia.* (2011) 167:635–46. doi: 10.1007/s00442-011-2018-9
  37. Drózd J, Demiaszkiewicz AW, Lachowicz J. Seasonal changes in the helminth fauna of *Cervus elaphus* (L.) from Słowiński National Park Poland. *Acta Parasitol.* (1993) 38:85–7.
  38. Drózd J, Lachowicz J. The helminth fauna of the roe deer *Capreolus capreolus* (L.) in a hunting area inhabited by red deer, elk and European bison (Borecka Forest), Poland over the yearly cycle. *Acta Parasitol.* (1992) 37:83–8.
  39. Kotrla B, Kotrlý A. The first finding of the Nematode *Ashworthius sidemi* Schulz, 1933 in *Sika nippon* from Czechoslovakia. *Folia Parasitol.* (1973). 20:377–8.
  40. Beck HE, Zimmermann NE, McVicar TR, Vergopolan N, Berg A, Wood EF. Present and future köppen-geiger climate classification maps at 1-km resolution. *Sci Data.* (2018) 5:1–12. doi: 10.1038/sdata.2018.214
  41. Mysterud A, Østbye E. Comparing simple methods for ageing roe deer *Capreolus capreolus*: are any of them useful for management? *Wildlife Biol.* (2006) 12:101–7. doi: 10.2981/0909-6396(2006)12[101:CSMFAR]2.0.CO;2
  42. Veiberg V, Nilsen EB, Rolandsen CM, Heim M, Andersen R, Holmstrøm F, et al. The accuracy and precision of age determination by dental cementum annuli in four northern cervids. *Eur J Wild Res.* (2020) 66:91. doi: 10.1007/s10344-020-01431-9
  43. Hansen J, Perry, BD. *The Epidemiology, Diagnosis, and Control of Helminth Parasites of Ruminants: A Handbook*. Nairobi: International Laboratory for Research on Animal Diseases (1994).
  44. McKenna PB. Comparison of two worm counting procedures for the enumeration of abomasal and small intestinal nematode parasites of sheep. *Vet Parasitol.* (2008) 157:254–9. doi: 10.1016/j.vetpar.2008.08.003
  45. Lichtenfels JR, Pilitt PA, Hoberg EP. New morphological characters for identifying individual specimens of *Haemonchus* spp. (Nematoda: trichostrongyloidea) and a key to species in ruminants of North America. *J Parasitol.* (1994) 80:107–19. doi: 10.2307/3283353
  46. Lichtenfels JR, Hoberg EP. The systematics of nematodes that cause ostertagiasis in domestic and wild ruminants in North America: an update and a key to species. *Vet Parasitol.* (1993) 46:33–53. doi: 10.1016/0304-4017(93)90046-P
  47. Drózd J. Polymorphism in the Ostertagiinae Lopez-Neyra, 1947 and comments on the systematics of these nematodes. *Syst Parasitol.* (1995) 32:91–9. doi: 10.1007/BF00009507
  48. Wickham H. *ggplot2: Elegant Graphics for Data Analysis*. New York, NY: Springer-Verlag (2016).
  49. Burnham KP, Anderson DR. *Model Selection and Multimodel Inference: A practical Information-Theoretic Approach*. 2nd ed. New York, NY: Springer (2002).
  50. R Core Team. *R: A Language and Environment for Statistical Computing*. R Core Team (2020).
  51. Wyrobisz-Papiewska A, Kowal J, Nosal P, Chovancová G, Rehbein S. Host specificity and species diversity of the Ostertagiinae Lopez-Neyra, 1947 in ruminants: a European perspective. *Parasit Vectors.* (2018) 11:1–10. doi: 10.1186/s13071-018-2958-6
  52. Kotrlá B, Kotrlý A. Helminths of wild ruminants introduced into Czechoslovakia. *Folia Parasitol.* (1977) 21:35–40.
  53. Dvorák J, Palyzová L. Analysis of the development and spatial distribution of sika deer (*Cervus nippon*) populations on the territory of the Czech Republic. *Acta Univ Agric et Silv Mendelianae Brun.* (2016) 64:1507–15. doi: 10.11118/actaun201664051507
  54. Schwartz B. A new parasitic nematode from the stomach of an unknown member of the Cervidae. (1926) *J Parasitol.* 13:25–8. doi: 10.2307/3271630
  55. Obayashi M. On *Spiculoptera yamashitai* N. sp. and *Rinadia japonica* N. sp. (Nematoda: Trichostrongylidae) from the Yeso island deer *Cervus nippon yesoensis* (Heude). *Jpn J Vet Res.* (1966) 14:117–22.
  56. Rehbein VS, Visser M, Lutz W. *Spiculoptera houdemeri* (Schwartz, 1926) (Nematoda, Trichostrongylidae, Ostertagiinae) aus Asien bei Sikahirschen (*Cervus nippon*) in Deutschland. *Z Jagdwiss.* (2003) 49:96–101. doi: 10.1007/BF02189738
  57. Rehbein S, Visser M. Die endoparasiten des Sikawildes (*Cervus nippon*) in Österreich. *Wien Klin Wochenschr.* (2007) 119:96–101. doi: 10.1007/s00508-007-0865-5
  58. Davidson RK, Ličina T, Gorini L, Milner JM. Endoparasites in a Norwegian moose (*Alces alces*) population - Faunal diversity, abundance and body condition. *Int J Parasitol.* (2015) 4:29–36. doi: 10.1016/j.ijppaw.2014.12.005
  59. Hofmann RR. Evolutionary steps of ecophysiological adaptation and diversification of ruminants: a comparative view of their digestive system. *Oecologia.* (1989) 78:443–57. doi: 10.1007/BF00378733
  60. Hoste H, Sotiraki S, Landau SY, Jackson F, Beveridge I. Goat-nematode interactions: think differently. *Trends Parasitol.* (2010) 26:376–81. doi: 10.1016/j.pt.2010.04.007
  61. Verheyden H, Richomme C, Sevila J, Merlet J, Lourtet B, Chaval Y, et al. Relationship between the excretion of eggs of parasitic helminths in roe deer and local livestock density. *J Helminthol.* (2020) 94:1–6. doi: 10.1017/S0022149X20000449
  62. Richard E, Gaillard JM, Saïd S, Hamann JL, Klein F. High red deer density depresses body mass of roe deer fawns. *Oecologia.* (2010) 163:91–7. doi: 10.1007/s00442-009-1538-z
  63. Ferretti F, Fattorini N. Competitor densities, habitat, and weather: effects on interspecific interactions between wild deer species. *Integr Zool.* (2020) 16:1–15. doi: 10.1111/1749-4877.12470
  64. Horcajada-Sánchez F, Escibano-Ávila G, Lara-Romero C, Virgós E, Barja I. The effect of livestock on the physiological condition of roe deer (*Capreolus capreolus*) is modulated by habitat quality. *Sci Rep.* (2019) 9:1–9. doi: 10.1038/s41598-019-52290-7
  65. Laca Megyesi Š, Königová A, Babják M, Molnár L, Rajský M, Szestáková E, et al. Wild ruminants as a potential risk factor for transmission of drug resistance in the abomasal nematode *Haemonchus contortus*. *Eur J Wild Res.* (2020) 66:1–6. doi: 10.1007/s10344-019-1351-x
  66. dos Santos MC, Amarante MRV, Amarante AFT. Is there competition between *Haemonchus contortus* and *Haemonchus placei* in a pasture grazed by only sheep? *Vet Parasitol.* (2020) 279:109054. doi: 10.1016/j.vetpar.2020.109054
  67. Vetyška V. Endoparasites of roe deer in the strakonice region. *Acta Vet Brno.* (1980) 49:91–103. doi: 10.2754/avb198049010091
  68. Kopecký M, Vojta J. Land use legacies in post-agricultural forests in the Doupovské Mountains, Czech Republic. *Appl Veg Sci.* (2009) 12:251–60. doi: 10.1111/j.1654-109X.2009.01023.x
  69. Kowal J, Kornaš S, Nosal P, Wajdzik M, Basiaga M, Lesiak M. Parasite infections in red deer *Cervus elaphus* from Krakow area, southern Poland. *Ann Parasitol.* (2015) 61:49–52.
  70. Santín-Durán M, Alunda JM, Hoberg EP, De La Fuente C. Abomasal parasites in wild sympatric cervids, red deer, *Cervus elaphus* and fallow deer, *Dama dama*, from three localities across Central and Western Spain: relationship to host density and park management. *J Parasitol.* (2004) 90:1378–86. doi: 10.1645/GE-3376
  71. Forristal VE, Creel S, Taper ML, Scurlock BM, Cross PC. Effects of supplemental feeding and aggregation on fecal glucocorticoid metabolite concentrations in elk. *J Wild Manag.* (2012) 76:694–702. doi: 10.1002/jwmg.312
  72. Vadlejch J, Kotrla B, Cadková Z, Ružičková A, Langrová I. Effects of age, sex, lactation and social dominance on faecal egg count patterns of gastrointestinal

- nematodes in farmed eland (*Taurotragus oryx*). *Prev Vet Med.* (2015) 121:265–72. doi: 10.1016/j.prevetmed.2015.07.006
73. Sinclair R, Melville L, Sargison F, Kenyon F, Nussey D, Watt K, Sargison N. Gastrointestinal nematode species diversity in Soay sheep kept in a natural environment without active parasite control. *Vet Parasitol.* (2016) 227:1–7. doi: 10.1016/j.vetpar.2016.07.020
74. Romportl D, Bláhová A, Andreas M, Chumanová E, Anděra M, Cervený J. Current distribution and habitat preferences of red deer and eurasian elk in the Czech Republic. *Eur J Environ Sci.* (2017) 7:50–62. doi: 10.14712/23361964.2017.5
75. Rehbein S, Visser M, Hamel D, Reindl H. Occurrence of the giant liver fluke, *Fascioloides magna*, in sympatric wild ungulates in one area in the Upper Palatinate Forest (northeastern Bavaria, Germany). *Parasitol Res.* (2021) 120:553–61. doi: 10.1007/s00436-020-06996-7
76. Bartoš L, Kotrba R, Pintír J. Ungulates and their management in the Czech Republic. In: Appolonio M, Andersen R, Putman R, editors. *European Ungulates and Their Management in the 21st Century*. Cambridge: Cambridge University Press (2010).
77. Kotrla B, Kotrly A, Kozdon O. Studies on the specificity of the nematode *Ashworthius sidemi* Schulz, 1933. *Acta Vet Brno.* (1976) 45:123–6.
78. Moskwa B, Bień J, Cybulska A, Kornacka A, Krzysiak M, Cencek T, et al. The first identification of a blood-sucking abomasal nematode *Ashworthius sidemi* in cattle (*Bos taurus*) using simple polymerase chain reaction (PCR). *Vet Parasitol.* (2015) 211:106–9. doi: 10.1016/j.vetpar.2015.04.013
79. Irvine RJ, Stien A, Halvorsen O, Langvatn R, Albon SD. Life-history strategies and population dynamics of abomasal nematodes in Svalbard reindeer (*Rangifer tarandus platyrhynchus*). *Parasitology.* (2000) 120:297–311. doi: 10.1017/S0031182099005430
80. Altizer S, Dobson A, Hosseini P, Hudson P, Pascual M, Rohani P. Seasonality and the dynamics of infectious diseases. *Ecol Lett.* (2006) 9:467–84. doi: 10.1111/j.1461-0248.2005.00879.x
81. Halvorsen O, Stien A, Irvine J, Langvatn R, Albon S. Evidence for continued transmission of parasitic nematodes in reindeer during the Arctic winter. *Int J Parasitol.* (1999) 29:567–79. doi: 10.1016/S0020-7519(99)00005-3
82. Halvarsson P, Höglund J. Sheep nemabiome diversity and its response to anthelmintic treatment in Swedish sheep herds. *Parasit Vectors.* (2021) 14:1–12. doi: 10.1186/s13071-021-04602-y

**Conflict of Interest:** The authors declare that the research was conducted in the absence of any commercial or financial relationships that could be construed as a potential conflict of interest.

**Publisher's Note:** All claims expressed in this article are solely those of the authors and do not necessarily represent those of their affiliated organizations, or those of the publisher, the editors and the reviewers. Any product that may be evaluated in this article, or claim that may be made by its manufacturer, is not guaranteed or endorsed by the publisher.

Copyright © 2022 Magdálek, Bourgoïn and Vadlejch. This is an open-access article distributed under the terms of the Creative Commons Attribution License (CC BY). The use, distribution or reproduction in other forums is permitted, provided the original author(s) and the copyright owner(s) are credited and that the original publication in this journal is cited, in accordance with accepted academic practice. No use, distribution or reproduction is permitted which does not comply with these terms.